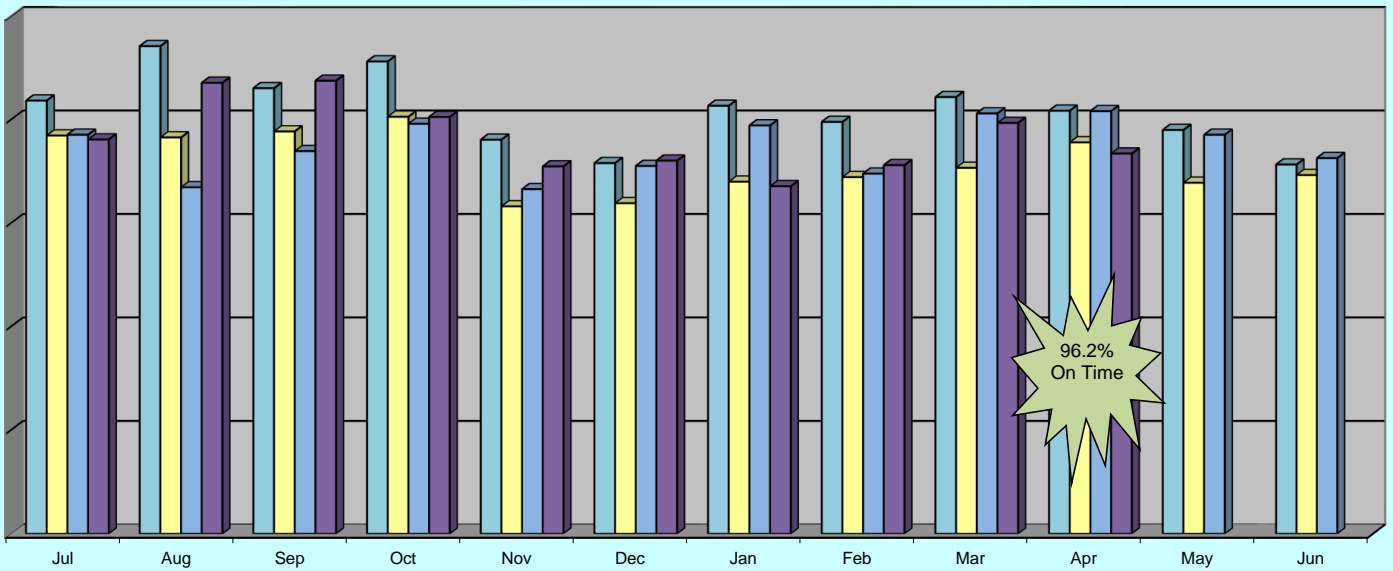


# Ridership Trends - April



Ridership Comparison by Month  
FY14 to FY17

	Jul	Aug	Sep	Oct	Nov	Dec	Jan	Feb	Mar	Apr	May	Jun
FY 14	2,093	2,356	2,153	2,282	1,904	1,791	2,068	1,990	2,110	2,044	1,951	1,784
FY 15	1,924	1,915	1,944	2,015	1,582	1,597	1,701	1,723	1,768	1,891	1,696	1,733
FY 16	1,928	1,674	1,849	1,981	1,665	1,777	1,973	1,740	2,031	2,042	1,928	1,815
FY 17	1,905	2,179	2,189	2,014	1,775	1,803	1,679	1,781	1,985	1,837		



Boardings Per Hour

