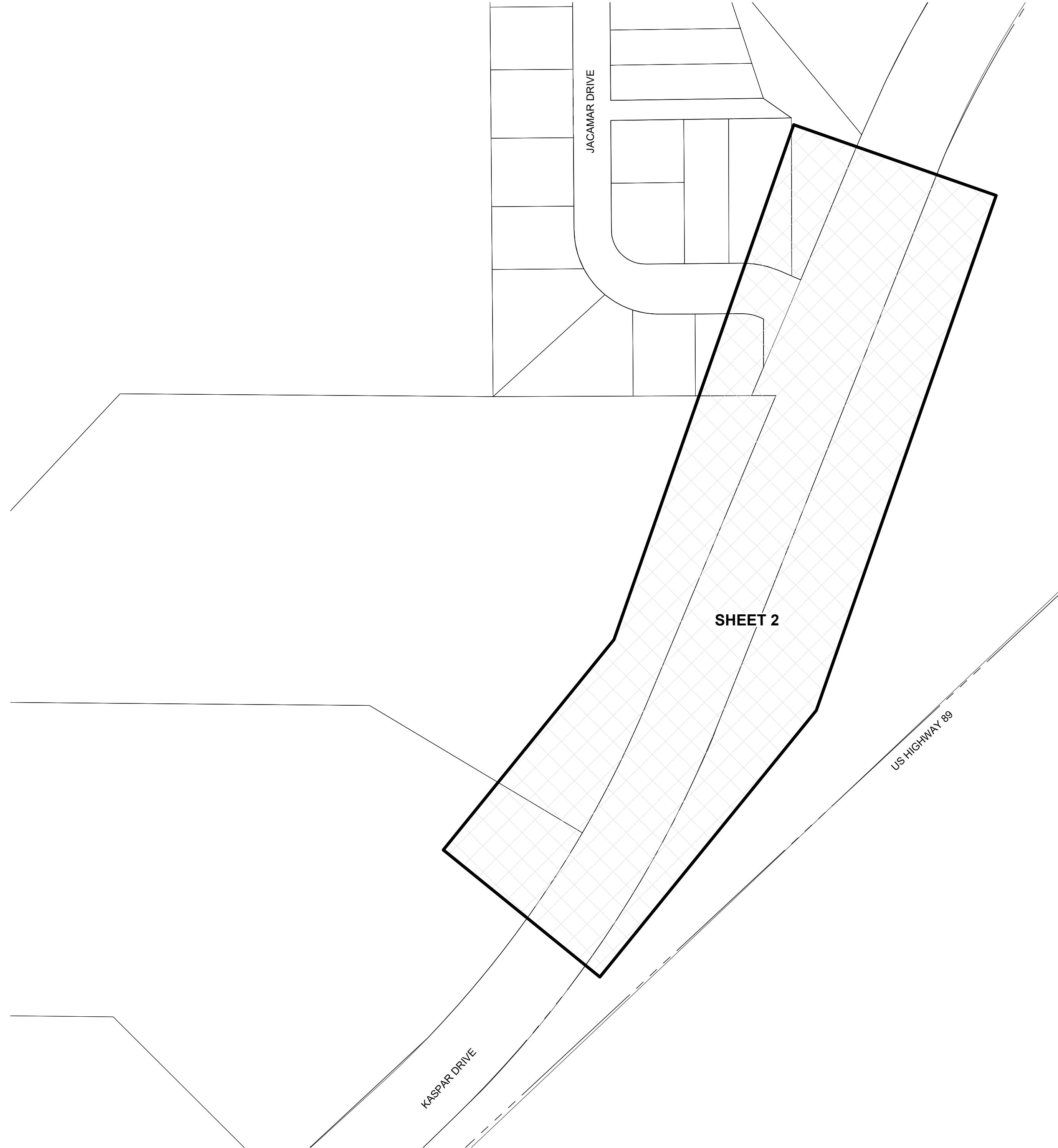


LEGEND

EXISTING HP GAS MAIN	
EXISTING GAS MAIN	
EXISTING GAS SERVICE	
GAS LINE TO BE ABANDONED	
STEEL RISER	
ANODELESS RISER	
GASLIGHT	
GAS VALVE	
EXCESS FLOW VALVE	
RELIEF VALVE	
COUPLINGS	
BOND OVER	
TEST POINT	
INSULATOR	
REGULATOR STATION	
RECTIFIER	
ANODE	
SCADA	
METER SET ASSEMBLY	
PURGE POINT	
BRANCH, CVT, LINE STOPPER	
PROPOSED HP GAS MAIN	
PROPOSED GAS MAIN	
PROPOSED GAS SERVICE	
EASEMENT	
ROW LINE	
PROPERTY LINE	
STREET CENTERLINE	
EDGE OF PAVEMENT	
CABLE LINE - UNDERGROUND	
ELECTRIC - OVERHEAD	
ELECTRIC - UNDERGROUND	
FIBER OPTIC - UNDERGROUND	
PHONE - OVERHEAD	
PHONE - UNDERGROUND	
RECLAIMED WATER	
SEWER	
STORMWATER	
WATER	
UTILITY PEDESTALS	
FIRE HYDRANT	
MANHOLE	
WATER VALVE	
SURVEY MONUMENT	
POWER POLE	
GAS FLOW ARROW	

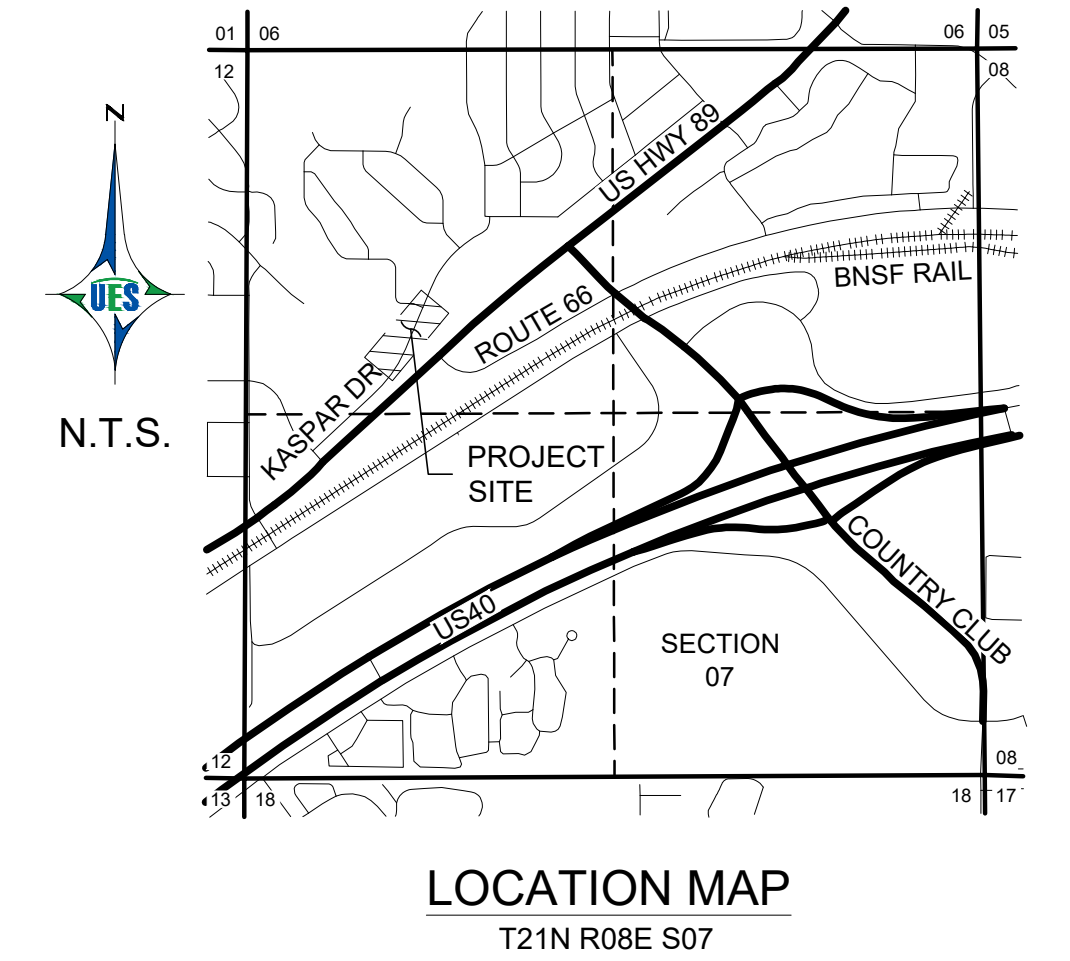
KASPAR AND LINDA VISTA IMPROVEMENTS FLAGSTAFF, AZ 86004



SHEET INDEX MAP

SHEET INDEX

- COVERSHEET
- PLAN AND PROFILE SHEET



LOCATION MAP
T21N R08E S07

SPECIAL NOTES

- CONTRACTOR WILL ALLOW FOR THE FOLLOWING CONDITIONS TO BE MET.
- MAINTAIN FLEET DRIVEWAY ACCESS; BUSES MUST BE ABLE TO ENTER/EXIT FLEET DRIVEWAY. SO TRAFFIC CONTROL ON SOUTHERLY EDGE KASPAR NEEDS TO BE PLACED SUCH THAT BUSES CAN SWING IN/OUT.
- NO FLEET DRIVEWAY CLOSURE ALLOWED. THERE WILL BE APS CONSTRUCTION ON MOUNTAIN LINE PROPERTY IN JAN/FEBRUARY FOR A CHARGING STATION PROJECT, IT WILL BLOCK OUR EMERGENCY EGRESS; AS SUCH, WE CANNOT HAVE FLEET DRIVEWAY CLOSED FOR THIRD PARTY CONSTRUCTION.
- MAINTAIN EMPLOYEE DRIVEWAY ACCESS(ES). IF THEY NEED TO BLOCK ONE, IT WOULD BE OUR EASTERN RIGHT IN/OUT DRIVEWAY. WE CAN DEAL WITH A SHORT-TERM CLOSURE OF THAT BUT WOULD NEED ADVANCE WARNING FOR STAFF.
- MAINTAIN KASPAR DRIVE TRAVEL LANE - FLAGGERS FINE, WE DON'T WANT TO HAVE TO DO A ROUTE 2 DETOUR. I WANT TO SAVE THAT SCENARIO AS OPTION FOR OUR KI CONTRACTOR MOT.

CONSTRUCTION NOTES

- UNS CONTACTS FOR THIS PROJECT BLAKE BERNER PROJECT PLANNER AT (928) 525-8135, TRAVIS PUKLAVITZ, CONSTRUCTION SUPERVISOR AT (928) 525-8136, AND JOSEPH BURRELL ENGINEER AT (928) 226-2266.
- INSTALL MAIN IN ACCORDANCE WITH MINIMUM DEPTHS OF UNISOURCE CONSTRUCTION STANDARDS. ANY VARIATIONS FROM UNISOURCE STANDARDS SHALL BE APPROVED IN ADVANCE OF CONSTRUCTION.
- ANY CHANGES TO DESIGN MUST BE APPROVED BY ENGINEERING.
- NOTES PERTAINING TO THIS PROJECT MAY BE COVERED ON OTHER SHEETS OF THE PROVIDED DRAWINGS.
- PIPE ALIGNMENT SHALL BE AS SHOWN ON PLANS OR AS DIRECTED BY THE ENGINEER. OFFSETS FROM PROPERTY LINES AND STRUCTURES TO THE PIPELINE REPRESENT THE BEST PLANNING PRIOR TO ACTUAL EXCAVATION.
- WELDED MITER JOINTS ARE NOT ALLOWED. ALL BENDS SHALL BE WITH WROUGHT STEEL FITTINGS OR IN ACCORDANCE WITH PIPE BENDING SPECIFICATIONS.
- WELDERS OF STEEL PIPE MUST BE QUALIFIED IN ACCORDANCE WITH API 1104 AND MUST HAVE CURRENT UNISOURCE WELDING CERTIFICATION.
- THE CONTRACTOR SHALL FURNISH HOLIDAY DETECTORS AND CHECK FOR HOLIDAYS IN THE PRESENCE OF THE INSPECTOR PRIOR TO LOWERING THE PIPE INTO THE TRENCH. ALL HOLIDAYS WILL BE REPAIRED AND RETESTED PRIOR TO INSTALLATION.
- ALL STEEL PIPE HAS BEEN FACTORY TESTED ACCORDING TO API 5L.
- PLACE WARNING TAPE ABOVE THE PIPE AT CENTER OF THE BACKFILL.
- ALL WORK, SHALL BE DONE WITHIN THE EXISTING RIGHT OF WAYS OR EASEMENTS UNLESS DIRECTED BY ENGINEERING.
- THE TRENCH SHALL BE CUT TO SUFFICIENT DEPTH TO PROVIDE A MINIMUM OF 48" FROM TOP OF PIPE IN ADOT ROW AND 36" ELSEWHERE. THE DEPTH OF TRENCH SHALL BE DEEPER IN SAND, DRAINAGE WAYS, AND UNIQUE CONDITIONS UPON DIRECTION FROM THE ENGINEER.
- THE INSTALLATION OF NATURAL GAS FACILITIES AND PIPING SHALL BE IN ACCORDANCE WITH THE APPLICABLE UNISOURCE CONSTRUCTION STANDARDS.
- ALL EXISTING UTILITIES SHOWN ARE BASED OFF OF AS-BUILTS. ALL UTILITIES ARE TO BE LOCATED IN THE FIELD PRIOR TO CONSTRUCTION.
- ALL EXISTING CULVERTS WILL REMAIN UNDISTURBED IN THE EXACT LOCATION PREVIOUS TO CONSTRUCTION.
- CARE SHALL BE TAKEN TO KEEP THE WORK AREA TO THE MINIMUM WIDTH NECESSARY. THE METHOD OF CLEARING THE WORK AREA SHALL TAKE INTO ACCOUNT MATTERS OF SOIL STABILITY, PROTECTION OF MATERIAL, VEGETATION, ADJACENT RESOURCES AND MINIMAL DISRUPTION OF WALKS, ROADS, AND OTHER STRUCTURES IN THE AREA.
- GAS LINE SHALL BE PLACED AT A MINIMUM OF 3' FROM ALL SEWER LINES AND 12" FROM ALL OTHER UTILITIES.
- ALL UTILITY RELOCATION WORK OTHER THAN NATURAL GAS FACILITIES SHALL BE DONE BY OTHERS.

CONTACT ARIZONA 811 AT LEAST TWO FULL WORKING DAYS BEFORE YOU BEGIN EXCAVATION



CALL 811 OR CLICK ARIZONA811.COM



UniSource Energy Services Confidential and Proprietary Information

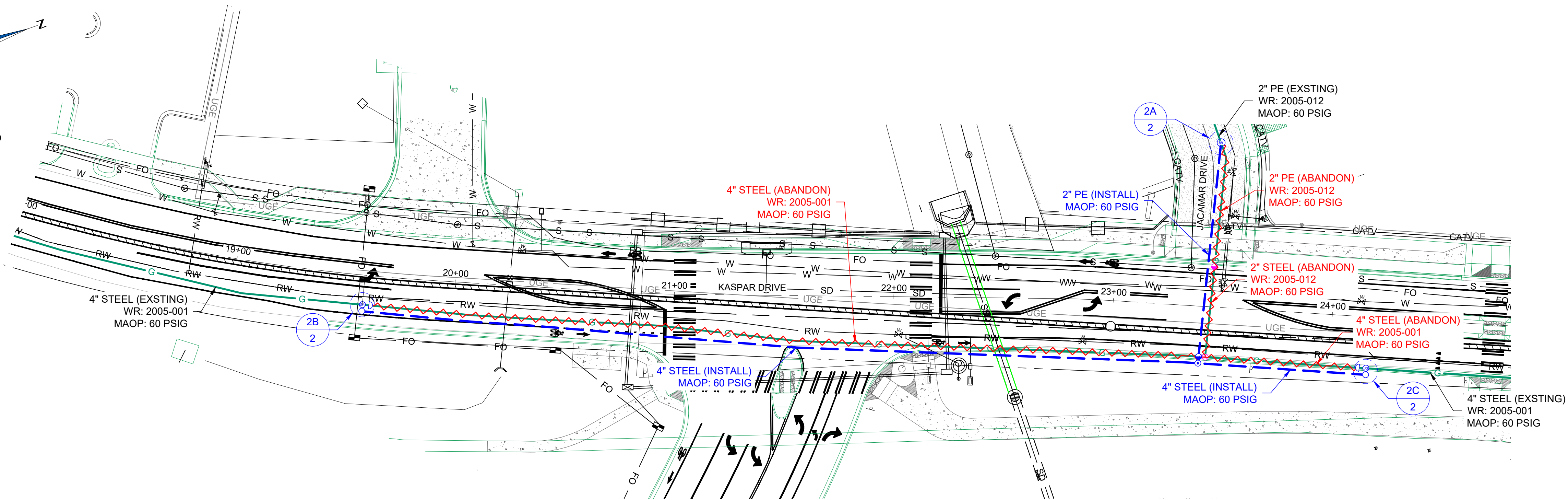
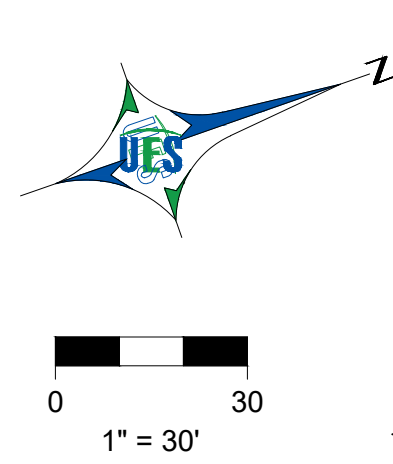
For Reference Only - Not Valid for Line Locating Purposes. No representation or warranty is made for the adequacy, accuracy or completeness of the information or depictions shown. This information is protected from further disclosure under the federal Freedom of Information Act and the Protected Critical Infrastructure Information Act of 2002, and Arizona Revised Statutes § 41-4272.

This document may not be copied, distributed, or shared to any other person or entity in any manner or form without prior written consent of UniSource Energy Services.

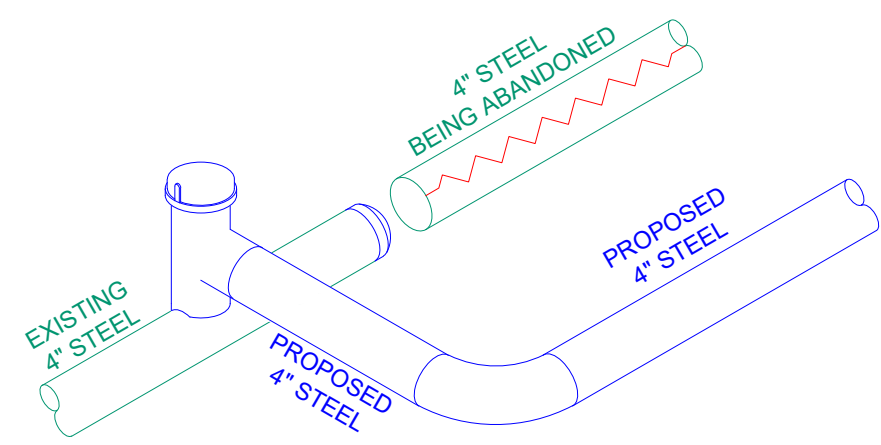
KASPAR AND LINDA VISTA IMPROVEMENTS FLAGSTAFF, AZ 86004

PLANNER: BLAKE BERNER	PHONE: (928) 525-8135
ENGINEER: JOSEPH BURRELL	PHONE: (928) 226-2266
WORK REQUEST #: DF21543	
DRAWN BY: JCB	REVIEWED BY: TP
DATE: 3/8/21	SCALE: 1" = 40'
APPROVED BY: JG	SHEET NO: 1 OF 2
FLAGSTAFF 1	LOCATION
SYSTEM MAOP: 60 PSI	T21N R08E S07

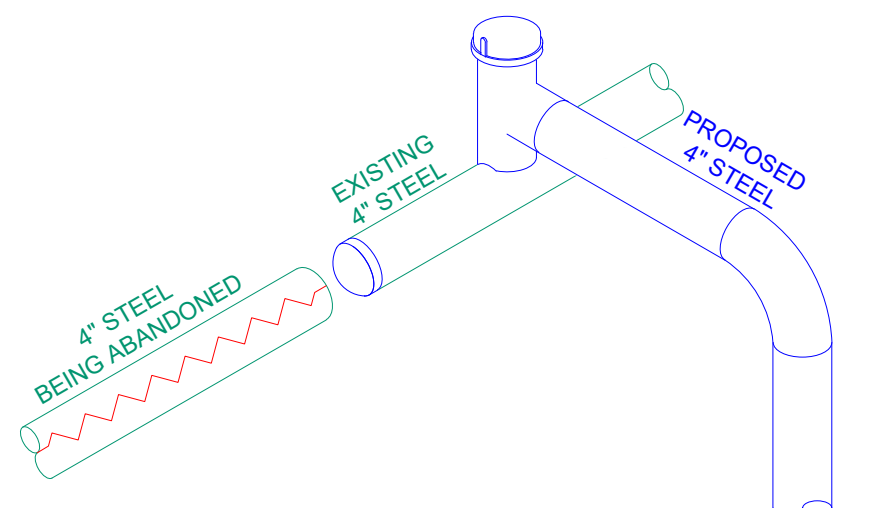
CVR



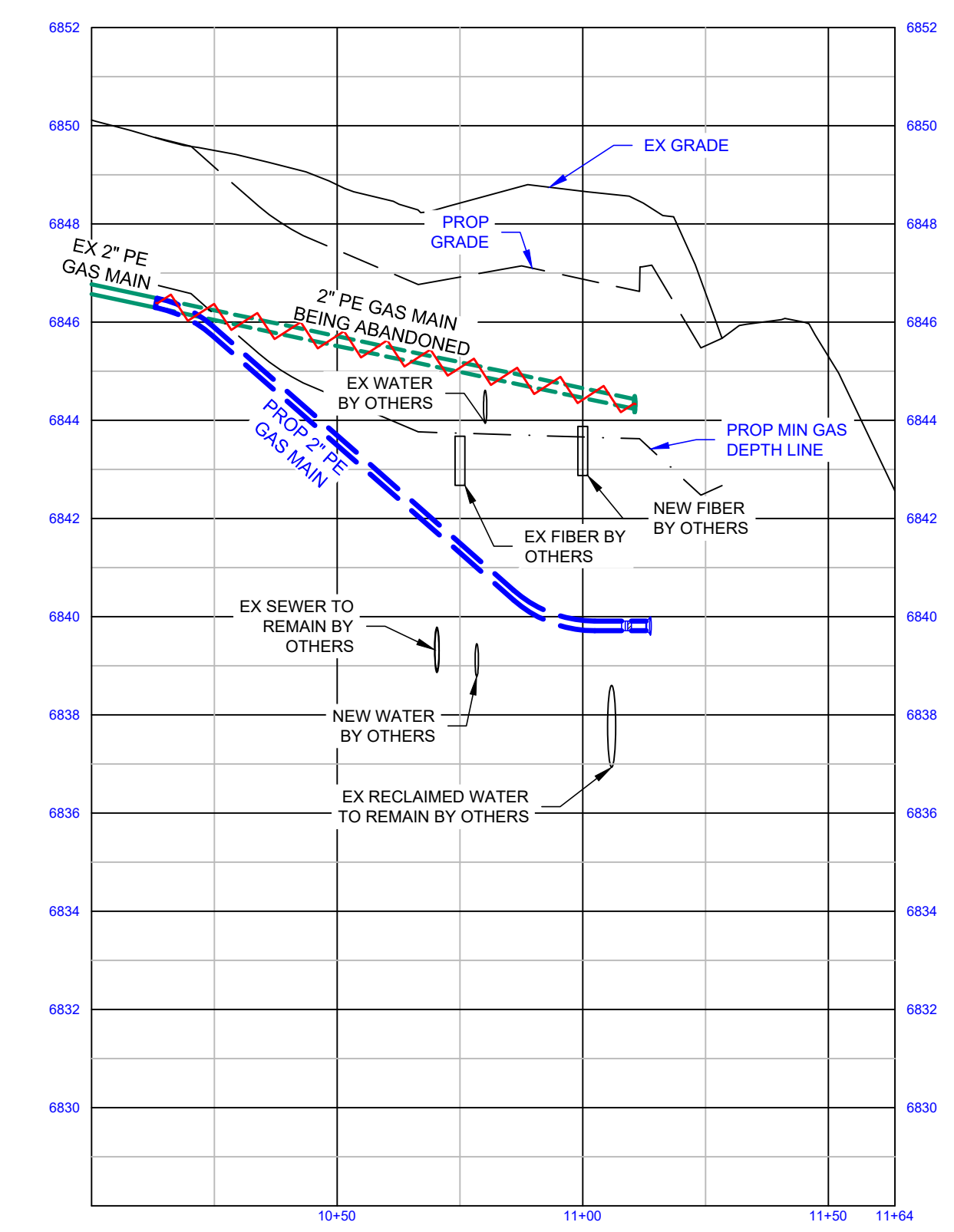
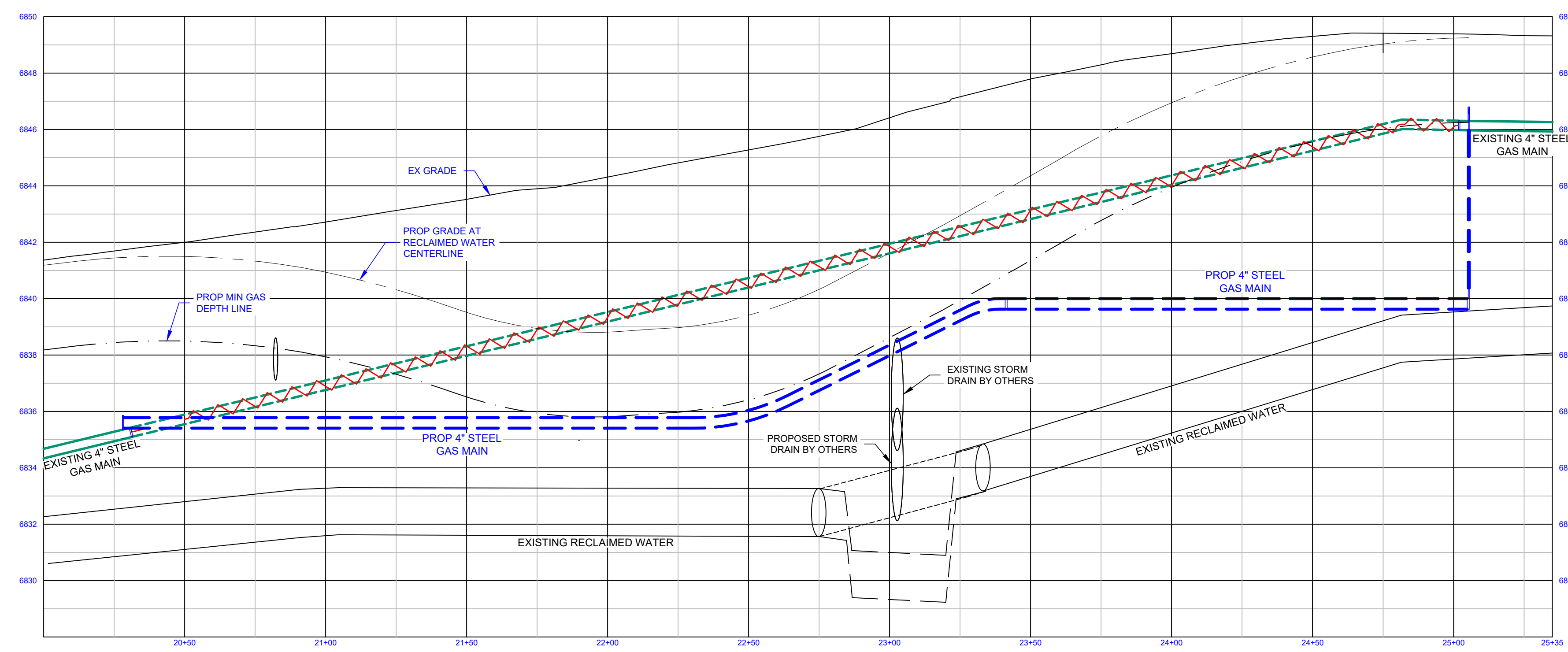
2A
2
DETAIL
NTS



2B
2
DETAIL
NTS



2C
2
DETAIL
NTS



CONTACT ARIZONA 811 AT LEAST TWO FULL WORKING DAYS BEFORE YOU BEGIN EXCAVATION
ARIZONA 811
CALL 811 OR CLICK ARIZONA811.COM



UniSource Energy Services Confidential and Proprietary Information
For Reference Only - Not Valid for Line Locating Purposes. No representation or warranty is made for the adequacy, accuracy or completeness of the information or depictions shown. This information is protected from further disclosure under the federal Freedom of Information Act and the Protected Critical Infrastructure Information Act of 2002, and Arizona Revised Statutes § 41-4272.
This document may not be copied, distributed, or shared to any other person or entity in any manner or form without prior written consent of UniSource Energy Services.

KASPAR AND LINDA VISTA IMPROVEMENTS
FLAGSTAFF, AZ 86004

PLANNER: BLAKE BERNER		PHONE: (928) 525-8135
ENGINEER: JOSEPH BURRELL		PHONE: (928) 226-2266
WORK REQUEST #: DF21543		
DRAWN BY: JCB	REVIEWED BY: TP	APPROVED BY: JG
DATE: 3/8/21	SCALE: 1" = 40'	SHEET NO: 2 OF 2
FLAGSTAFF 1	LOCATION	PLN
SYSTEM MAOP: 60	T21N R08E S07	