



Mountain Line

3773 N. Kaspar Drive · Flagstaff, AZ 86004 · 928-679-8900 · FAX 928-779-6868 · www.mountainline.az.gov

Addendum #2

DATE: August 25, 2021

TO: All Interested Vendors for NAIPTA RSOQ 2020-400, Civil Engineering and Design Services

FROM: Heather Higgins, Purchasing and Contracts Officer, DBELO, DPPA

This addendum (Addendum #2) is hereby made part of RSOQ 2022-400 and shall be considered a part of the bid specifications for all purposes including bid preparation and evaluation.

- The due date and time for SOQ's is September 15, 2021.
- The attached Civic Space Design and Planting Design are to be part of the RSOQ and must be included in the ROQ.

For any questions, contact Heather Higgins at Mountain Line, 3773 N Kaspar Dr, Flagstaff, Arizona 86004. Telephone: (928) 679-8907. Email: purchasing@naipta.az.gov

This addendum must be signed by an authorized person and submitted with your submittal package.

I have read this addendum and understand the information stated above.

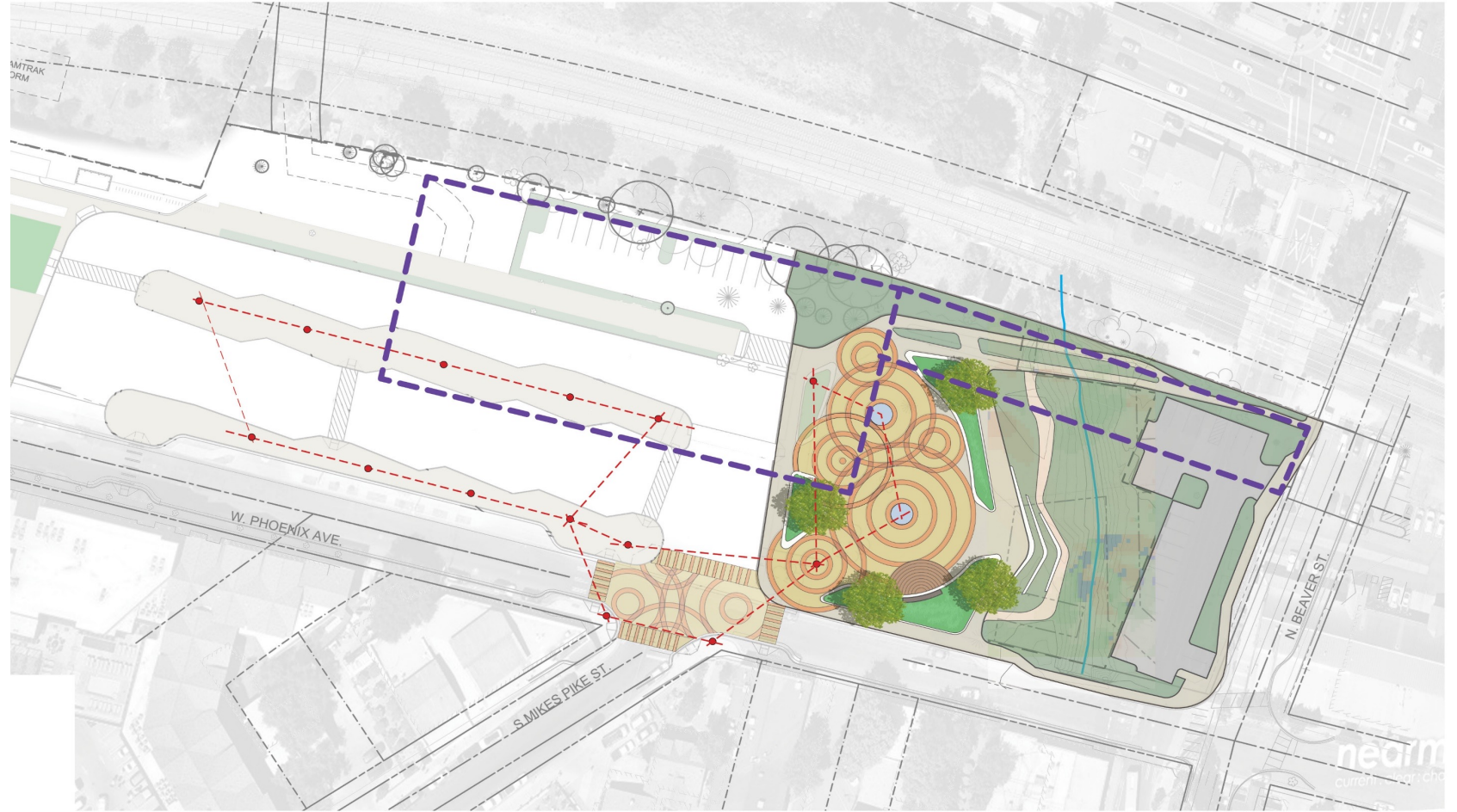
Authorized Signature

Date

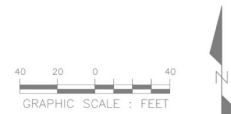
Print or Type Name of Authorized Person

Getting you where you want to go

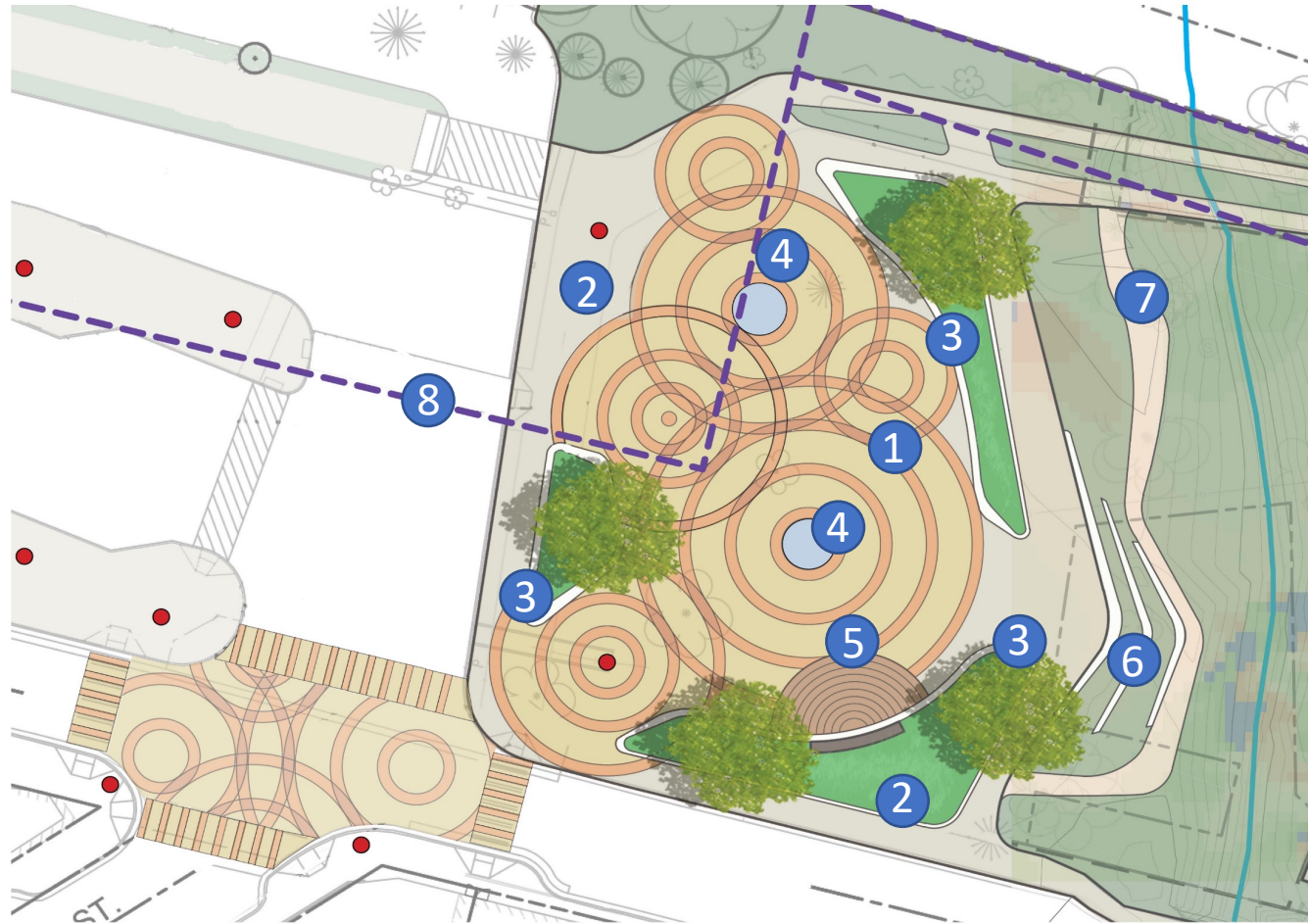




Site Concept — Setting for Art Constellation



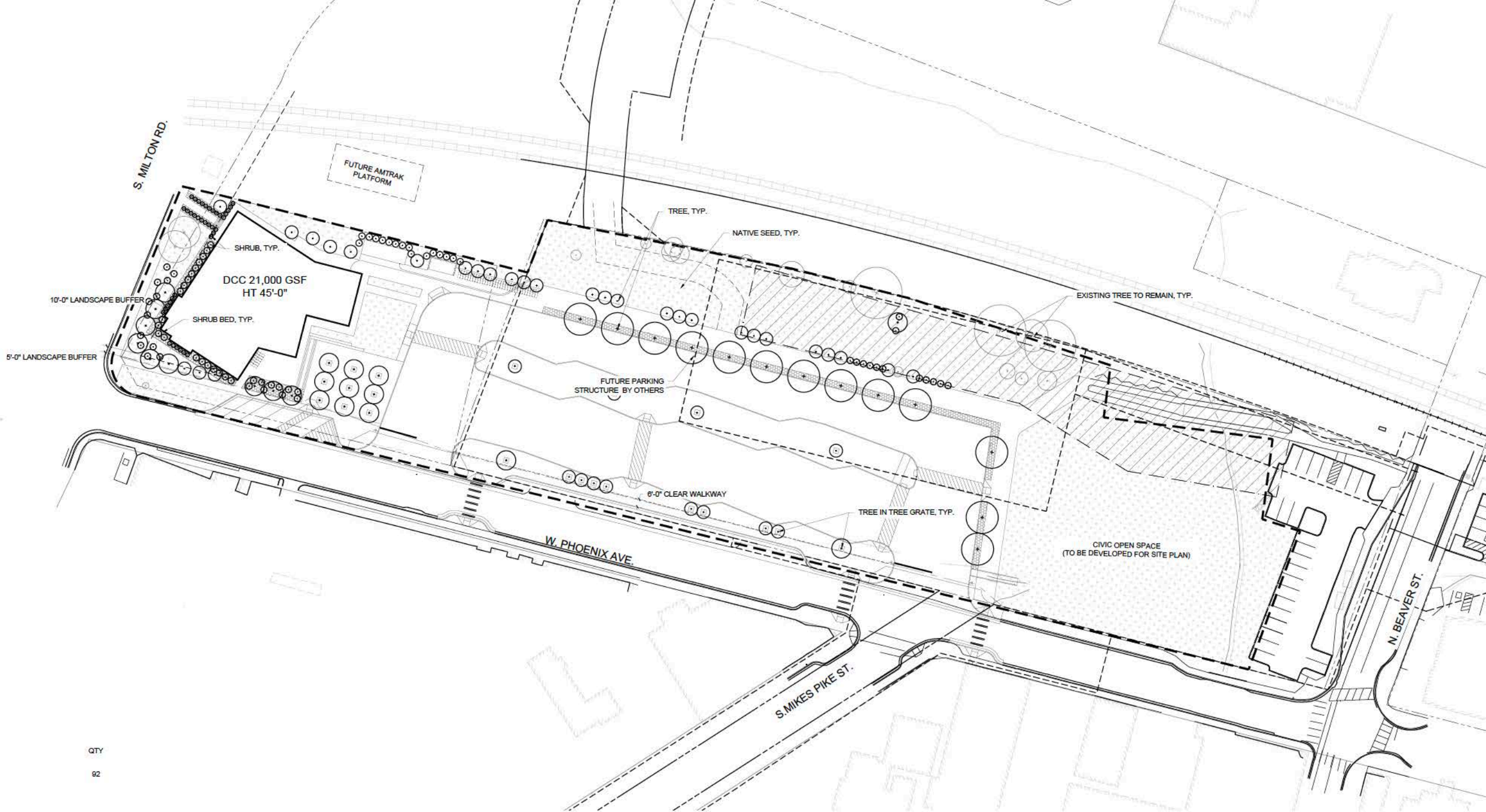
- 1 Civic Green w/Seating & Paving Art
- 2 Pop-up Retail & Food Truck Opportunity
- 3 Raised Seat Wall/Planter
- 4 Art Pedestal
- 5 Flexible Stage/Platform
- 6 Seating Terrace
- 7 Foot Path With Nature/Historical interpretive signage
- 8 Future Parking Structure by Others



- Invite people to linger, congregate and socialize and enhance the character of Flagstaff as a place of great natural beauty and celebrate community's cultural creativity.
- Make public transportation attractive and easily accessible and send the message that public transportation is an integral part of city life.
- Integrate public art with the place and community that tells stories of the past and acts as icons of unity for the future.

Lighting & Paving Artwork @ Intersection,
Sense of Arrival, place where Flagstaff begins

Civic Space Concept – People + Mobility + Art



LEGEND

	TREE	QTY	92
	TOTAL TREES		87
	SHRUB		142
	PLANTING BED		8,350 SF
	NATIVE SEED		
	EXISTING TREE TO REMAIN		19

PLANTING DESIGN DESCRIPTION:

THE INTENT OF THIS LANDSCAPE DESIGN IS TO IMPROVE THE AESTHETIC QUALITY OF THE SITE, WHILE TAKING INTO ACCOUNT LIMITED WATER RESOURCES, MAINTENANCE REQUIREMENTS AND CLIMATE. DROUGHT TOLERANT PLANTS WILL BE GROUPED WITH OTHERS OF SIMILAR WATER REQUIREMENTS TO ENSURE EFFICIENT WATER USAGE. NATIVE VEGETATION WILL BE UTILIZED AS MUCH AS POSSIBLE, BOTH TO INCREASE SUCCESS RATE OF ESTABLISHMENT AND PROVIDE A CONSISTENT AESTHETIC WITH THE SURROUNDING AREA.

