

# DOWNTOWN CONNECTION CENTER

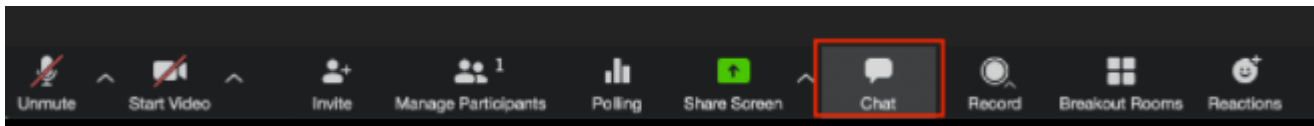
**CONNECTING  
FLAGSTAFF**



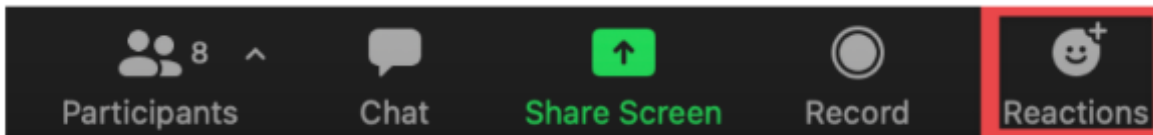
Downtown Connection Center Virtual Public Meeting

# WHAT TO EXPECT DURING/AFTER TODAY'S VIRTUAL MEETING

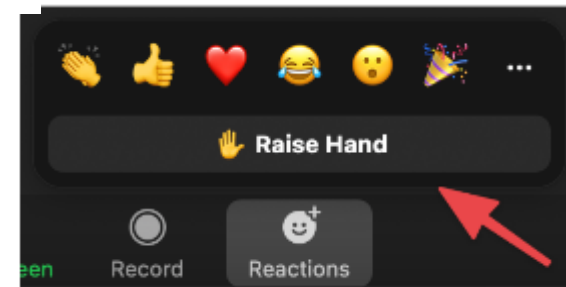
- Live presentation will be recorded and placed online at [mountainline.az.gov/dcc](https://mountainline.az.gov/dcc)
- Non-presenters will be muted during the meeting
- To submit questions / comments use the **Chat** feature



- If you wish to speak, use the **Raise Hand** feature



*Note: "Reactions" is the fifth option from the left at the bottom of the screen.*



*Note: Click "Raise Hand" at the bottom of the screen.*

## PROJECT TEAM PRESENTERS



**Kate Morley**

Mountain Line - Project Manager



**Jennifer Love**

AECOM – Project Lead



**Jana L Weldon**

City of Flagstaff –  
Beautification, Arts &  
Sciences Project  
Administrator

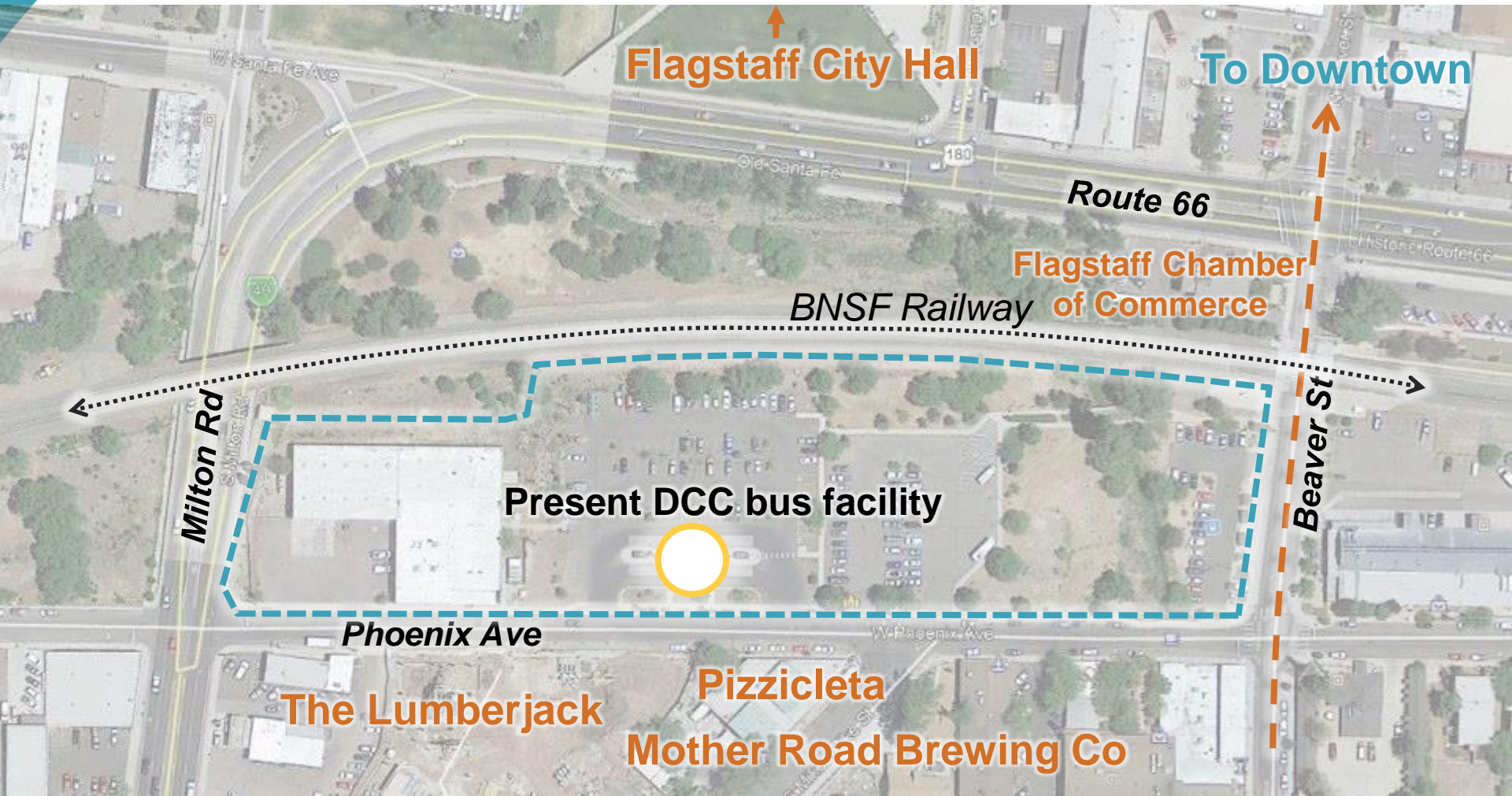
# AGENDA

- Project Overview
- Site Concept
- DCC Building
- Civic Space
- Public Art Ideas Overview
- Project Schedule
- Next Steps
- Feedback Opportunities

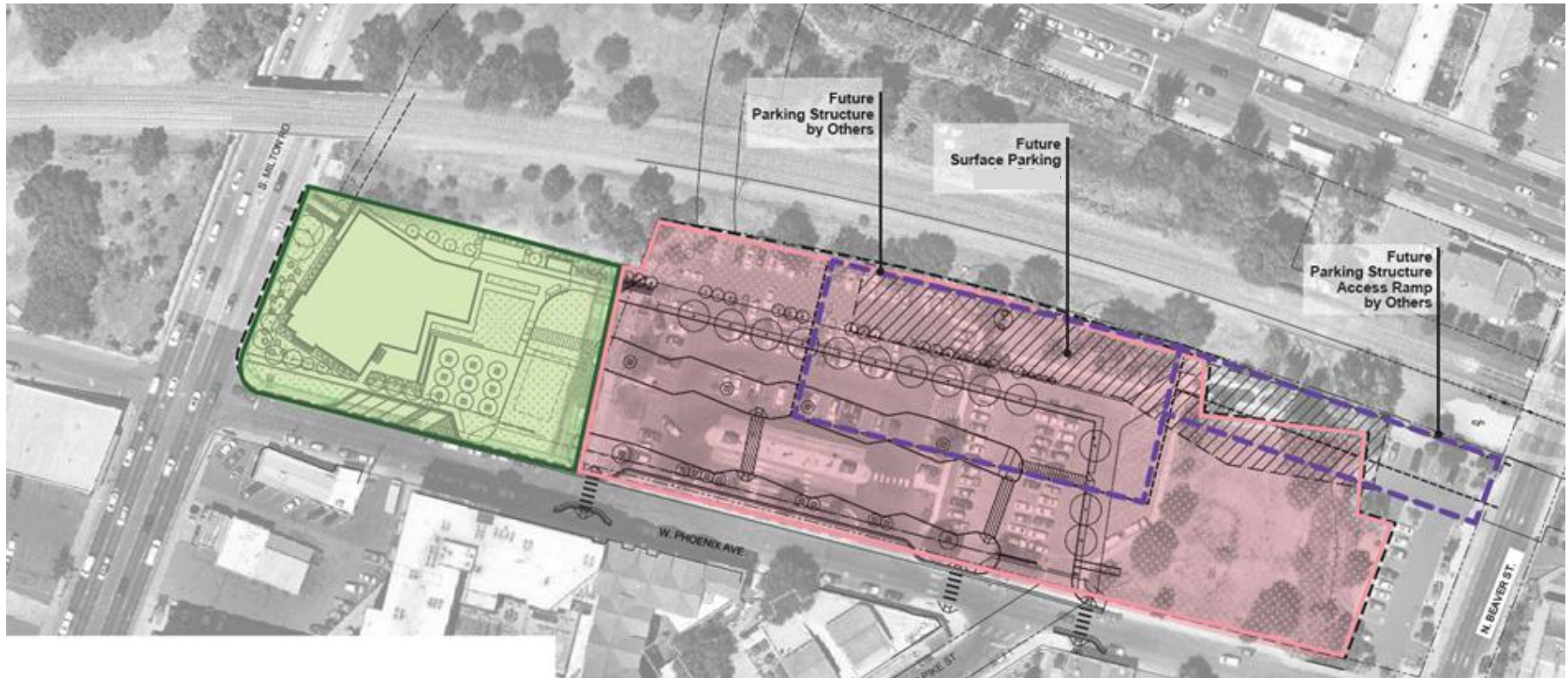


*Mountain Line's vision for the Downtown Connection Center (DCC) is to create an inviting and welcoming space for customers, with a focus on safety and sustainable design. The new DCC will provide basic necessities including restrooms, customer service, operations and dispatch spaces, and administration offices. It will be a multimodal connection center and provide for long-term service expansion, regional transportation services, and be a hub of bike and pedestrian activity.*





# Project Update – Site Plan Overview

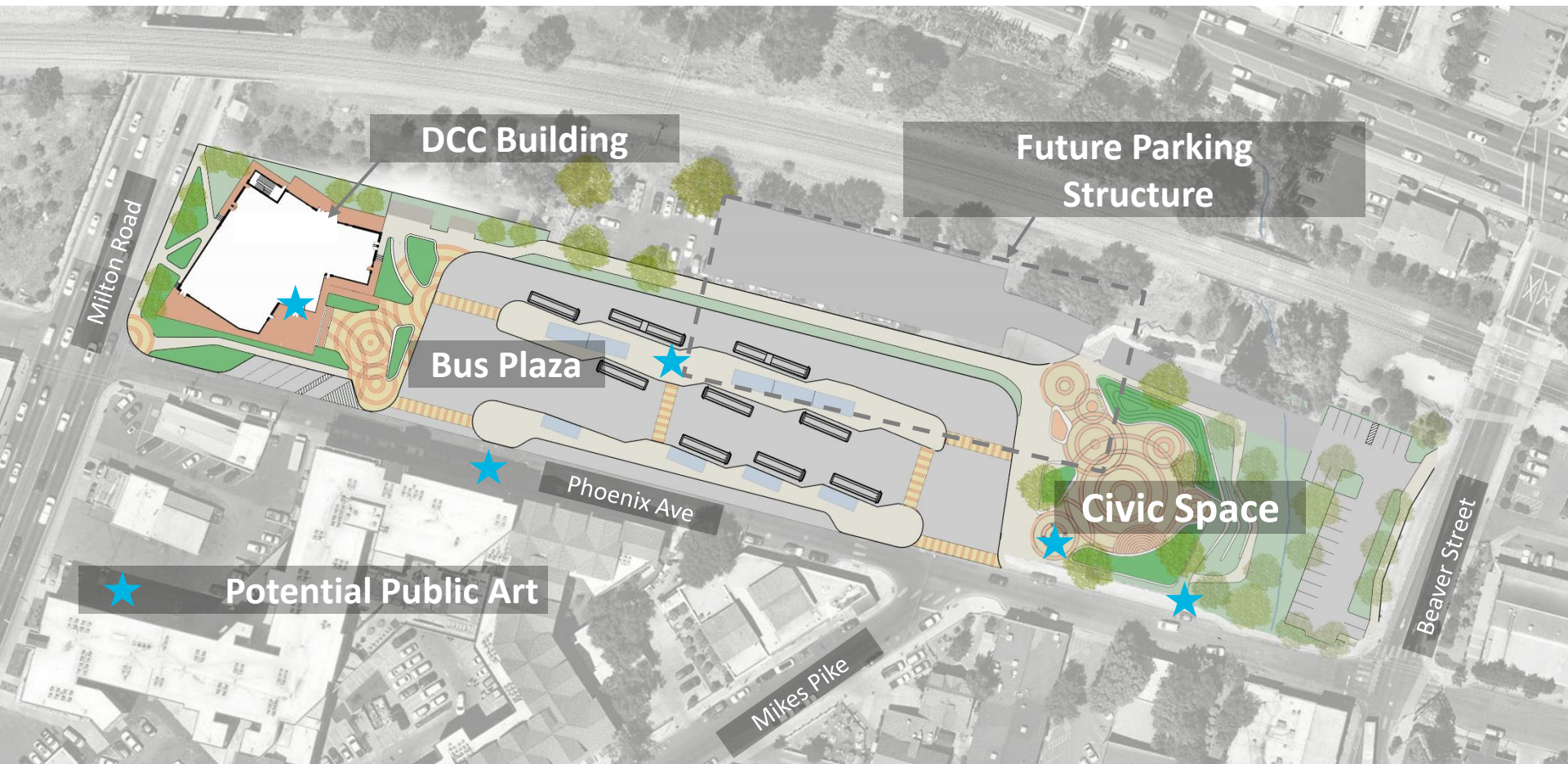


## PROJECT OVERVIEW

- Currently located on Phoenix Ave: City owned property
- At MAXIMUM capacity
- Challenging access for buses and patrons
- Lacks customer amenities

	2008	2019
Total Annual Riders	1,000,000	2,500,000
Routes	6	10
Buses	30'	40' and 60'
Buses per Day	158	355





# PUBLIC FEEDBACK SUMMARY

## Flagstaff Community Forum DCC Survey

- Requested feedback on transit and multi-modal amenities, design considerations, and community amenities that should be at the DCC
- 260 visitors, 145 survey responses

## Project Advisory Committee

- Committee includes Mountain Line staff
- Meets monthly to discuss topics including the DCC

## Stakeholder Working Group

- Participants include community members/transit riders, Southside neighborhood residents, various City of Flagstaff Departments, and Coconino County Sustainable Building Program, and various other local organizations
- 5 meetings since October 2020

## PUBLIC FEEDBACK SUMMARY

## Flagstaff Community Forum DCC Survey Results

- What **transit and multi-modal amenities** would you like to see available at the new DCC?
    - Top 4 Responses:
      1. Indoor Waiting Area
      2. Pass Sales
      3. Customer Service
      4. Separate sidewalks and bikeways
  - If there is capacity to serve **additional community purposes**, what would you like to see?
    - Highest priorities from 145 responses:
      1. Public Art
      2. Outdoor civic space
      3. Food and beverage
      4. Social services
      5. Community meeting space
      6. Newsstand
      7. Retail
      8. Office Space
- View the full results of the DCC Flagstaff Community Forum Survey:**  
[https://www.flagstaff.az.gov/3284/Flagstaff-Community-Forum#peak\\_democracy](https://www.flagstaff.az.gov/3284/Flagstaff-Community-Forum#peak_democracy)

## PUBLIC FEEDBACK SUMMARY

## Flagstaff Community Forum DCC Survey Results

- **What else should be considered in the design?**
- Responses:
  - Honor the look, history, and architecture of Flagstaff and the Southside community
  - Design for safety
  - Indoor/outdoor waiting areas
  - Incorporate sustainable features/renewable energy

**View the full results of the DCC Flagstaff  
Community Forum Survey:**

[https://www.flagstaff.az.gov/3284/Flagstaff-Community-Forum#peak\\_democracy](https://www.flagstaff.az.gov/3284/Flagstaff-Community-Forum#peak_democracy)



## PUBLIC FEEDBACK SUMMARY

## Stakeholder Working Group Input Summary

## ■ Civic Space Design

- Community Events:
  - Open central space for event flexibility
  - Electricity/power needed for events
  - Raised platform/stage for performances
- Flexible seating opportunities
- Space should serve both daily travelers and community
- Water-conscious landscape design

## ■ DCC Building Design

- Preserve Flagstaff aesthetic, mountain architecture
- Reflect historic elements of Flagstaff
- Maximize natural lighting
- Maintain human scale

## View of Main Building Entrance



View from Milton Road





## How we used your feedback:

- Preserve Flagstaff community aesthetic
- Reflect historic elements of Flagstaff and the surrounding community
- Maximizes natural lighting, provides the opportunity for solar energy capture
- Maintain human scale
- Patron amenities both indoors and outdoors





## View from Bus Plaza



② EAST - ENTRANCE ELEVATION  
1/8" = 1'-0"

Roof  
33' - 6"

Second Floor  
19' - 6"

First Floor  
3' - 6"



STACKED SANDSTONE  
BUFF



STACKED SANDSTONE  
ROSA



BOARD FORM CONCRETE



METAL PANEL

## View from Milton Road Side



① S. MILTON RD  
1/8" = 1'-0"

Roof  
33' - 6"

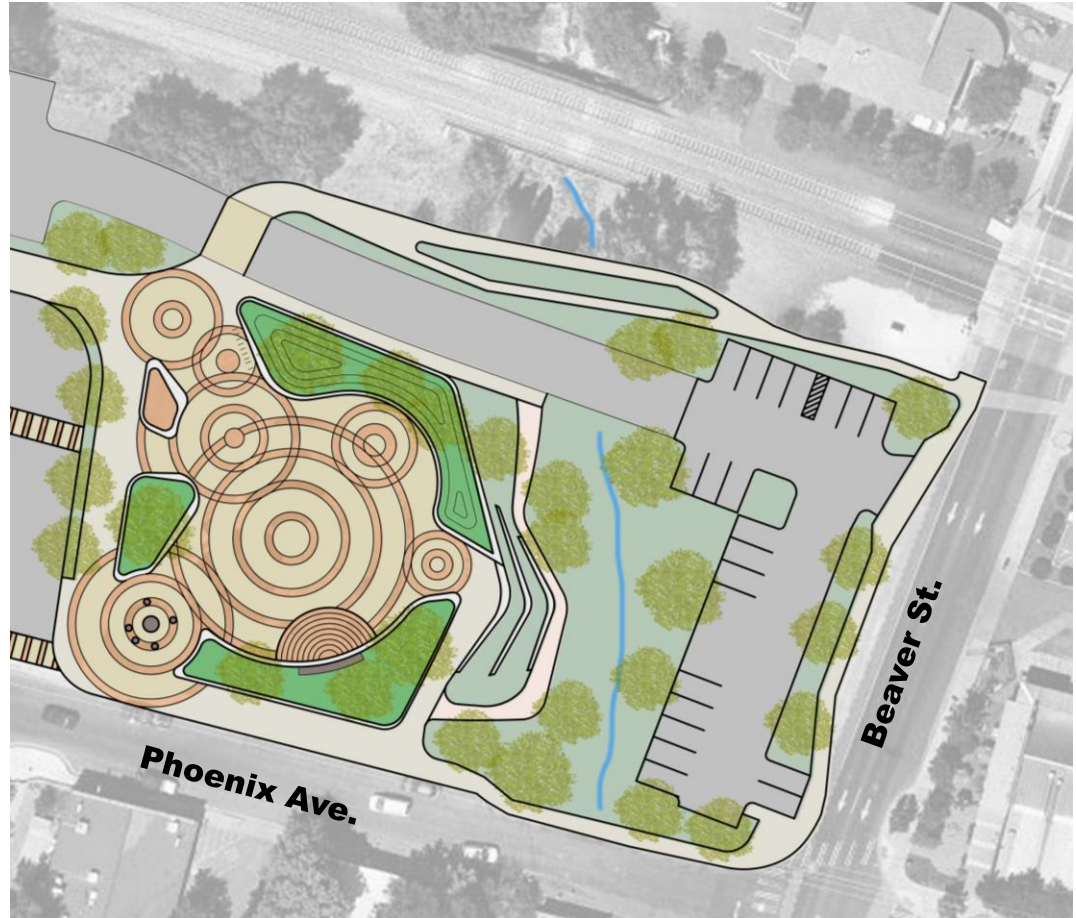
Second Floor  
19' - 6"

First Floor  
3' - 6"

Questions?

## How we used your feedback:

- Larger open hardscape space conducive to hosting community events
- Integrated public art plan
- Platform for performances
- Natural landscape preserves character of Rio de Flag channel with water-conscious landscape

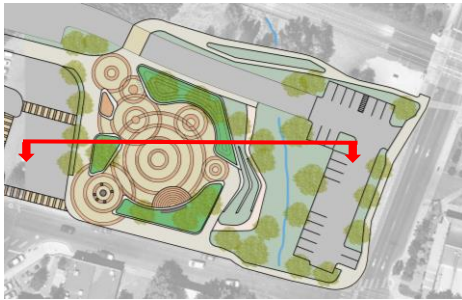


## CIVIC SPACE SITE COMPONENTS

- 1 Civic Green w/Seating & Paving Art
- 2 Pop-up Retail & Food Truck Opportunity
- 3 Raised Seat Wall/Planter
- 4 Signature Public Art Component
- 5 Flexible Stage/Platform
- 6 Seating Terrace
- 7 Foot Path With Natural/ Historical Interpretive Signage
- 8 Decorative Pavement Marking at Intersection







Civic Green



Natural Landscape



# Public Art Ideas Overview

# INSPIRATION IMAGES



## Mountains & Trees



## Logging



## Heroes



## Towers



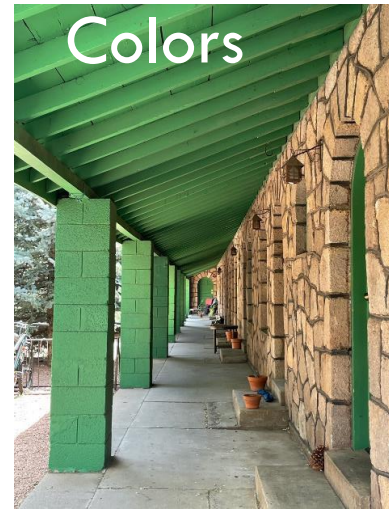
## Symbols







Circles



Colors



Masonry

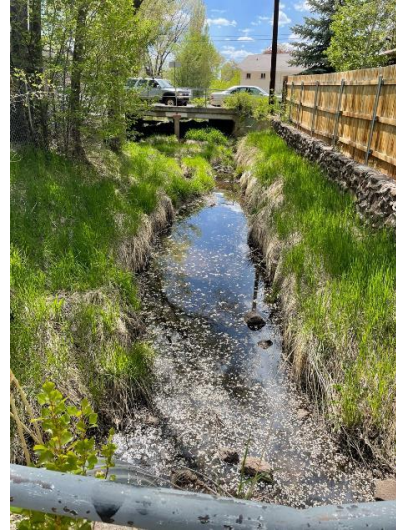


Wood

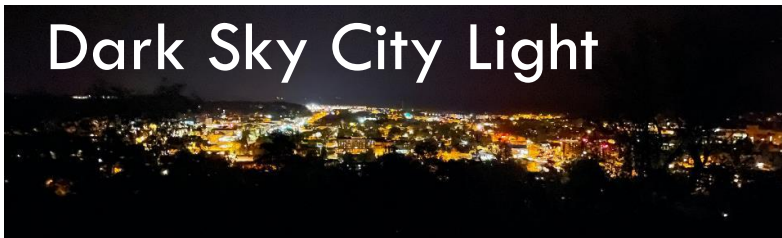




## Paving



## Dark Sky City Light



# ART MASTER PLAN



## ART MASTER PLAN – All Options (June 2021)

## ART PROJECTS

## LEGEND

**Building Entry**

1. Suspended sculpture in lobby clerestory
2. Glass art facade above entry door
3. Welcome mat paving art or small sculpture at entry door
4. "Transformer" landmark sculpture and seat in DCC plaza

**Bus Bays**

5. Rotating community art displays on shelter surfaces
6. Unique artist-designed sculptural shelter or roof canopy

**Intersection**

7. Crosswalk paving art on Phoenix Avenue at Mikes Pike Street
8. "Transformer" landmark sculpture and seat in enlarged sidewalk area

**Civic Green**

9. Paving artwork at FUTS trail intersection
10. Sculpture grove with rotating or permanent community sculpture
11. Small gathering place at corner: seating, table, sculpture
12. Large gather space at detention basin: retaining walls, terraces, and landscape form amphitheater

**Rio Bridges**

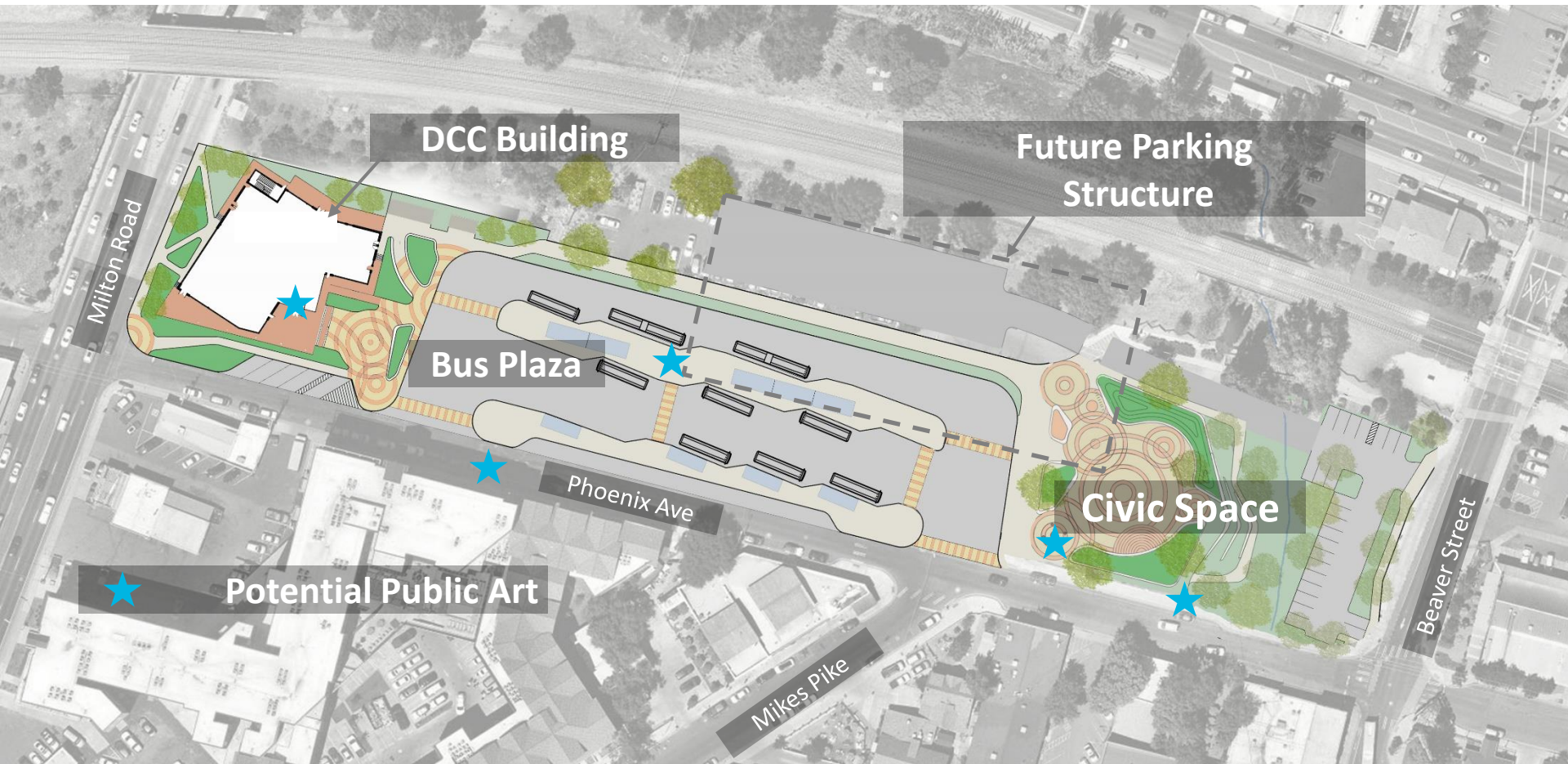
13. Artist-designed bridge with seating and overlook at Rio de Flag stream
14. Plaques with artist illustrations telling Southside stories on Route 66 bridge railing along Phoenix Avenue

**Southside Gateway**

15. "Transformer" landmark sculpture and seat in landscape on S. Beaver St.



# ART MASTER PLAN – Refined Options (September 2021)

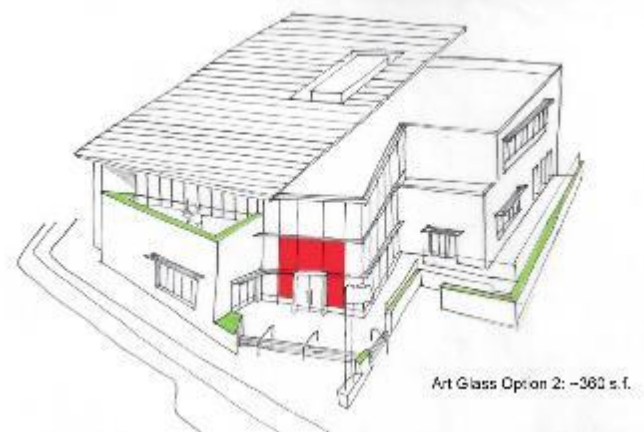
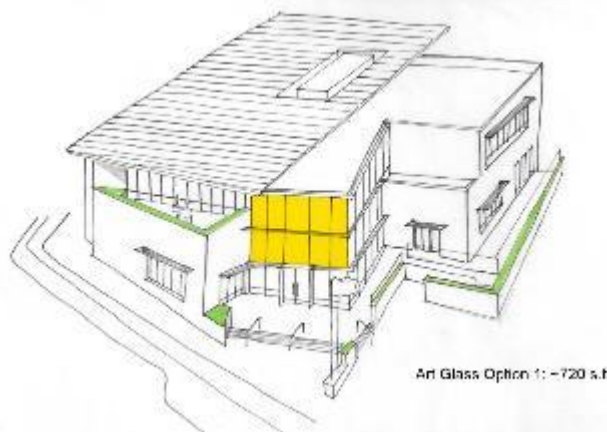




# ART PROJECTS

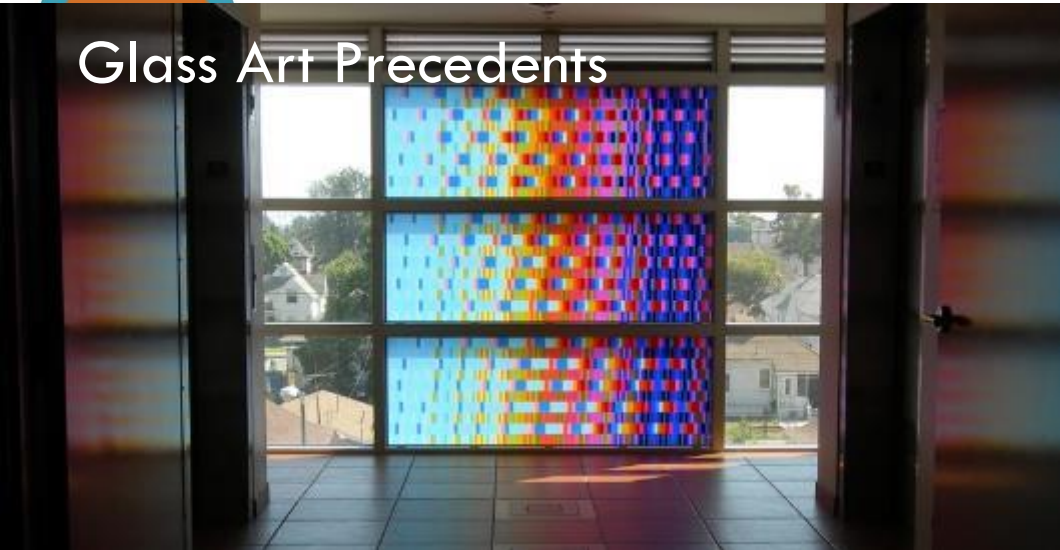
# ILLUMINATED GLASS ART —Building Entry Facade

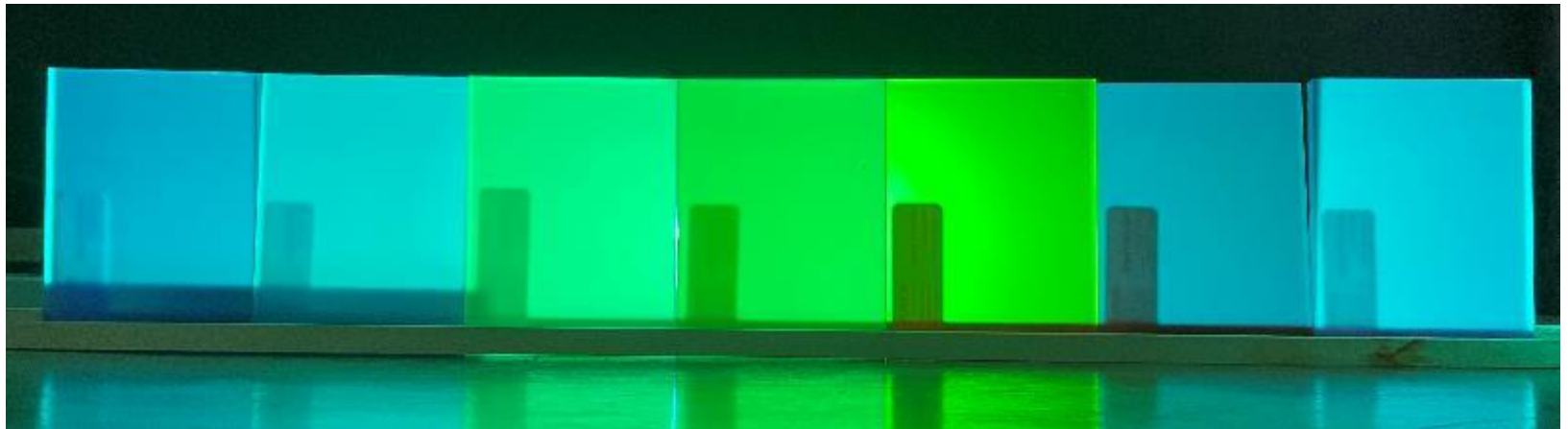
- Opportunity for Haddad | Drugan, lead artist
- Laminated glass with colored enamel imagery to be attached against interior face of curtainwall glazing system
- RGB LED wall washers attached to ceiling of DCC lobby and diagonally aimed downward to backlight glass
- Artist to collaborate with architects to refine art integration





## Glass Art Precedents





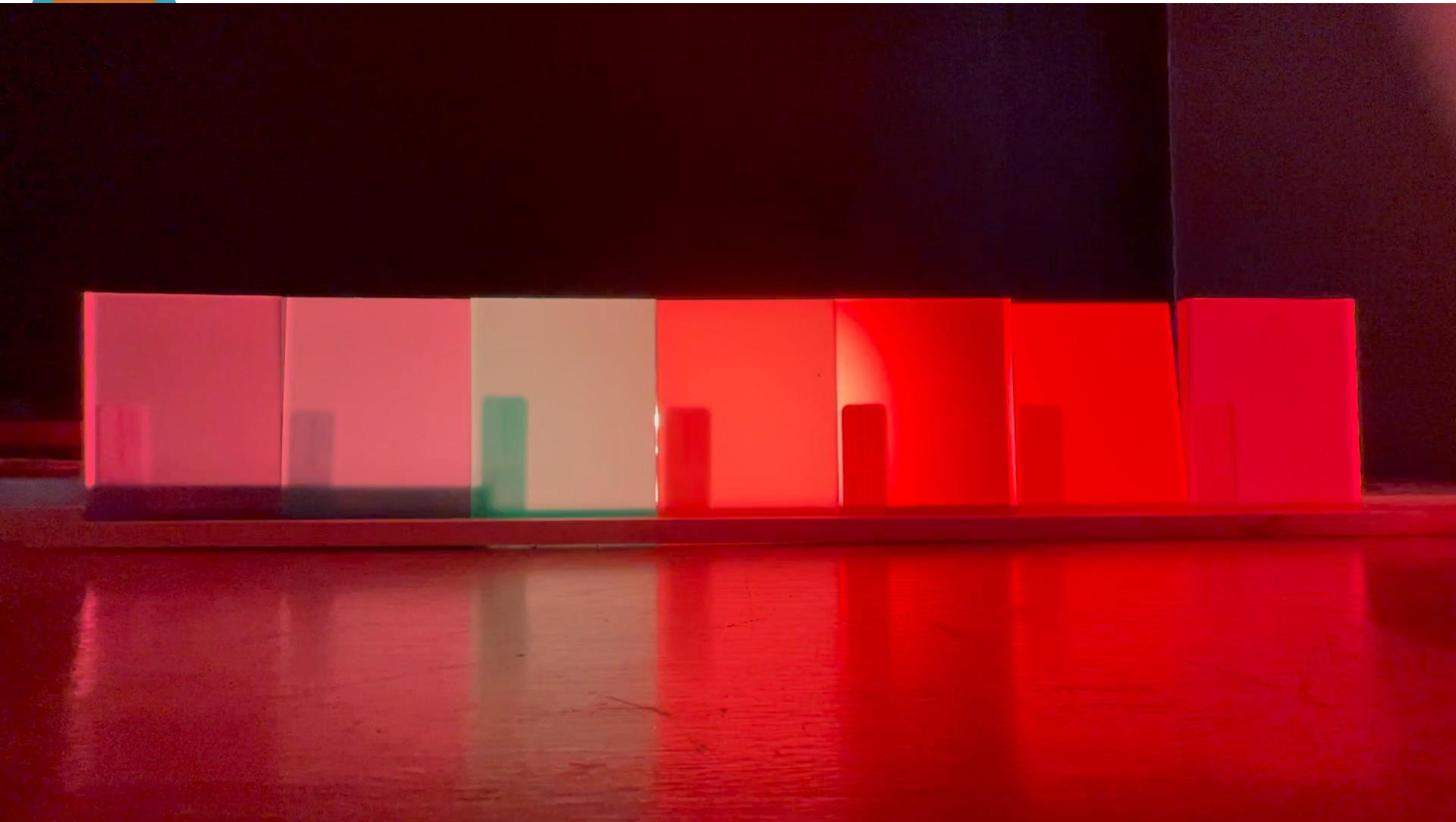
Addition of cyan colored light behind spectrum samples





Glass pattern will overlay images that variously appear and disappear with different light colors

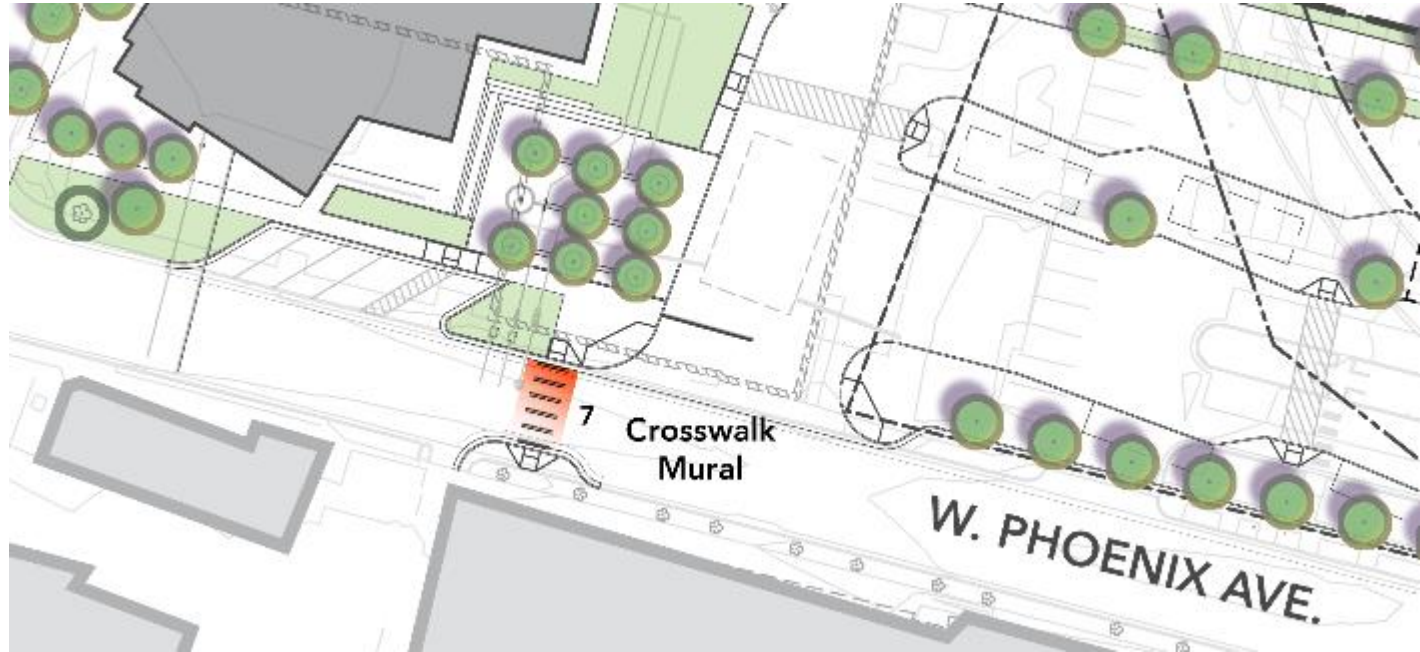






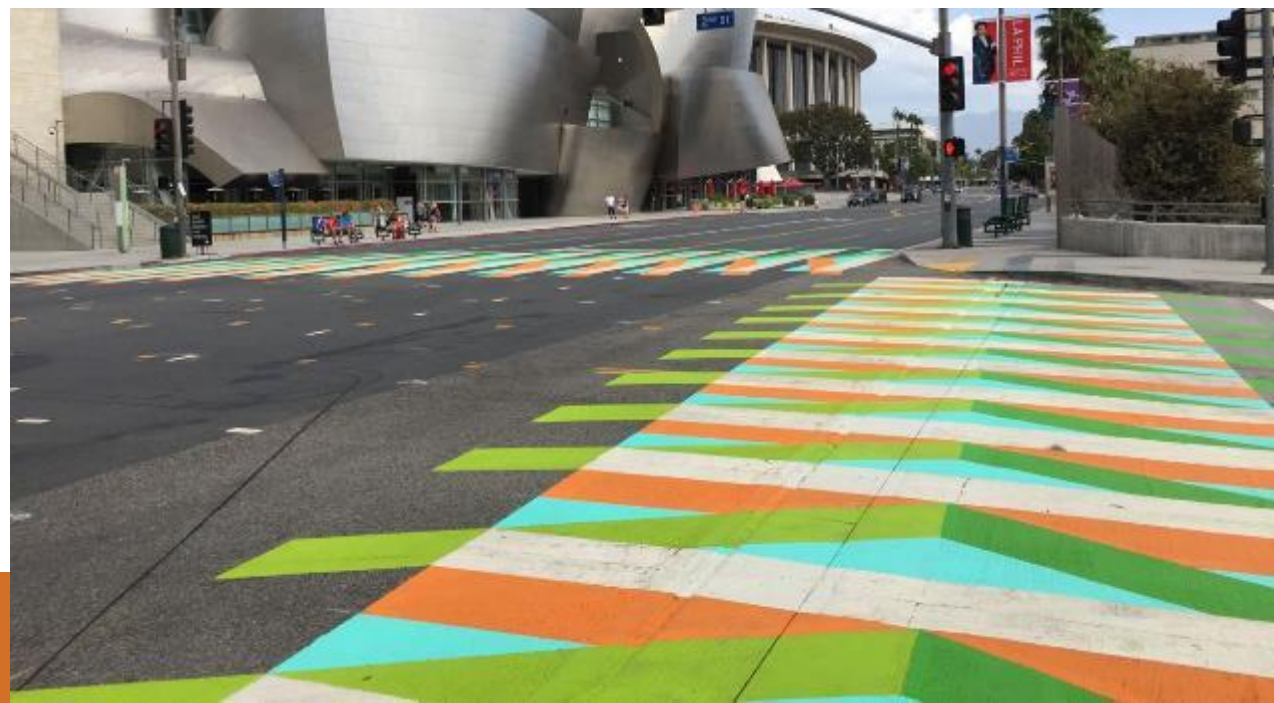
# CROSSWALK MURAL — Phoenix Avenue

- Opportunity for local regional artist(s)
- Artwork applied to asphalt paving at crosswalk connects DCC entry plaza with south side of Phoenix Avenue
- Artwork incorporated with crosswalk marking pattern will promote safety and enhance Phoenix Avenue's pedestrian environment
- Mural material TBD based on desired longevity of artwork
- Rotating temporary displays lasting 2-3 years will allow more artists to have opportunities and will keep the art display current and fresh





# Art Applied to Asphalt Surface





# Art Stamped into Asphalt Surface





# ROTATING ART — Bus Bays

- Opportunity for local regional artists
- Rotating two-dimensional art displays located at bus bays
- Display system to be designed by lead artist in collaboration with architects





# Bus Bay Art Display Precedents





# CIVIC ICON & PLACE — Civic Space

- Opportunity for Haddad | Drugan, lead artist
- Iconic sculpture and art seat and table elements will be integrated with Civic Space design
- Sculpture at southwest corner forms a nexus point that is a gateway to both the DCC and Civic Space; gateway will be visible from Mikes Pike, Phoenix Avenue, and Civic Space
- Artwork may be moved due to future site activities; yellow outline denotes area that may not be disturbed due to Rio box culvert installation; sculpture located early will need to be protected or temporarily removed during Rio construction
- Artist to collaborate with landscape architects to refine art integration





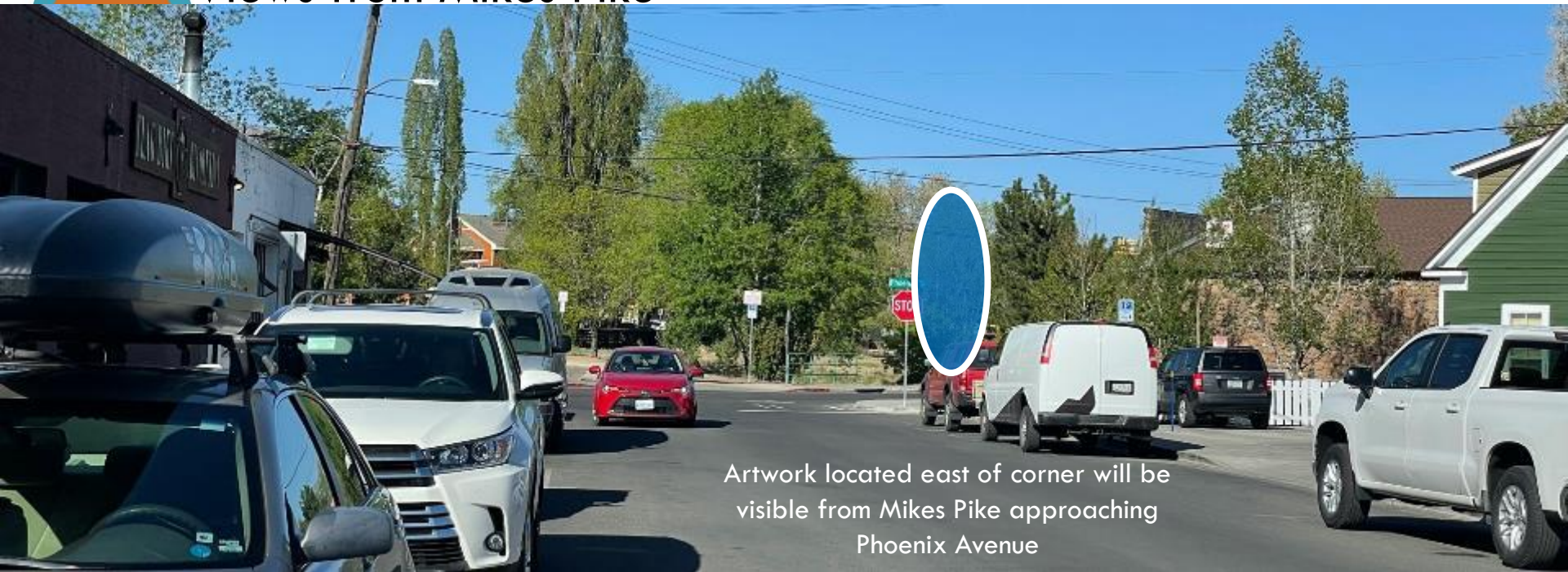
# Gateway & Gathering—View from Phoenix Avenue

- Prominent Southside and Route 66 location offers opportunities for multi-layered, culturally and historically meaningful artwork
- Immediate adjacencies of the artwork to DCC Bus Bays, Phoenix Avenue sidewalks, and future FUTS trail suggest the creation of functional art that acts as a place for impromptu stops as well as planned small gatherings
- Art will be a focal point, entry marker, immersive experience, and potentially the first built element of a larger civic open space where community events can be held





## Views from Mikes Pike





# "Grove" Iconic Sculpture Concept

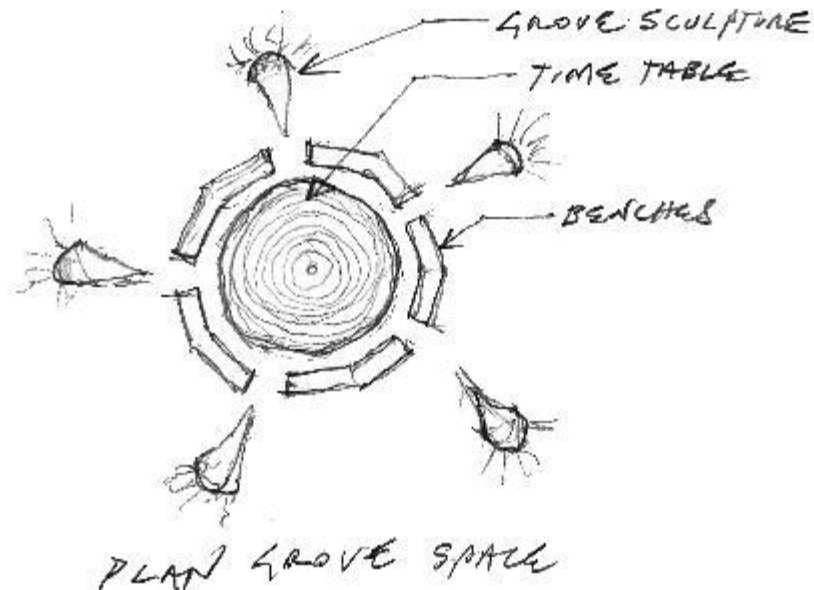
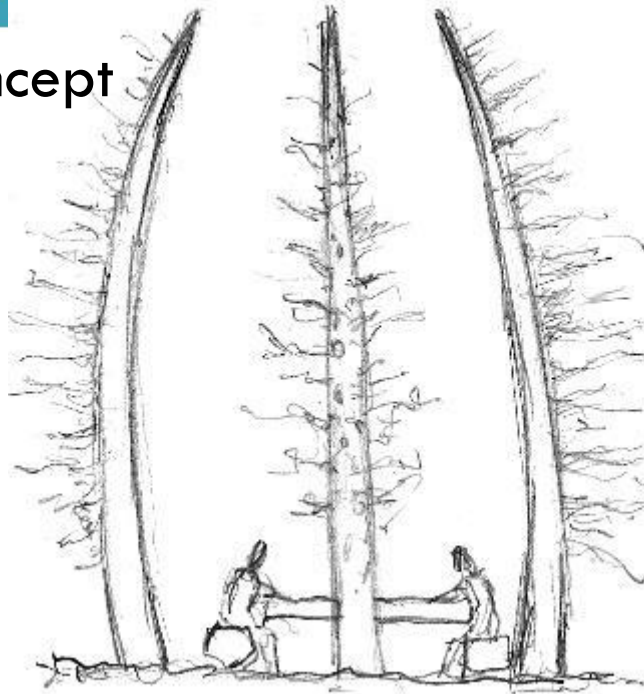
- The primary art concept is inspired by the aura, atmosphere, and forms of ponderosa pine tree groves
- Secondary art elements that reference the Southside's historic relationship with the logging industry are also being explored





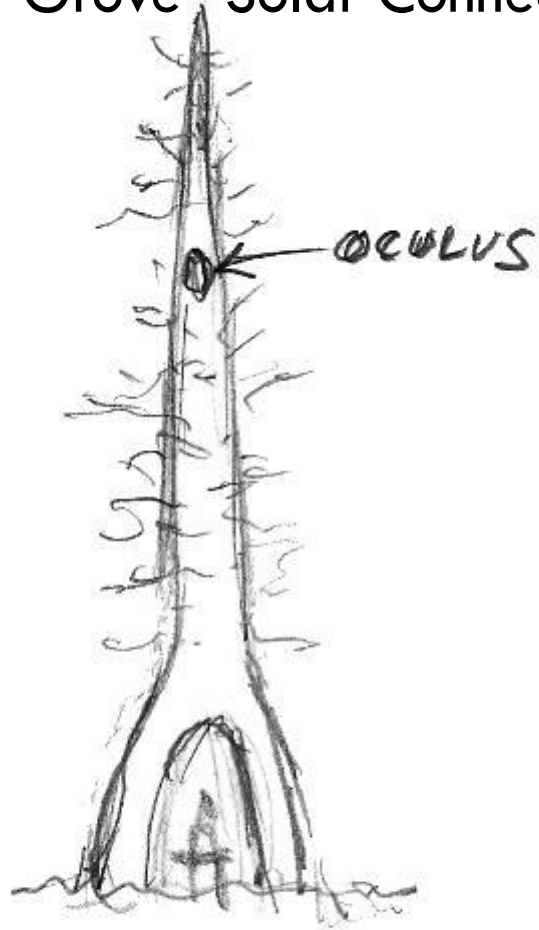
# “Grove” Design Concept

- Sculptural vertical elements form an abstracted “grove of trees”
- Vertical elements will incorporate textures and stories related to Flagstaff
- Table and benches may be incorporated with grove feature or placed separately within civic space
- Sculpture design is in progress with different forms, materials, locations and arrangements being explored

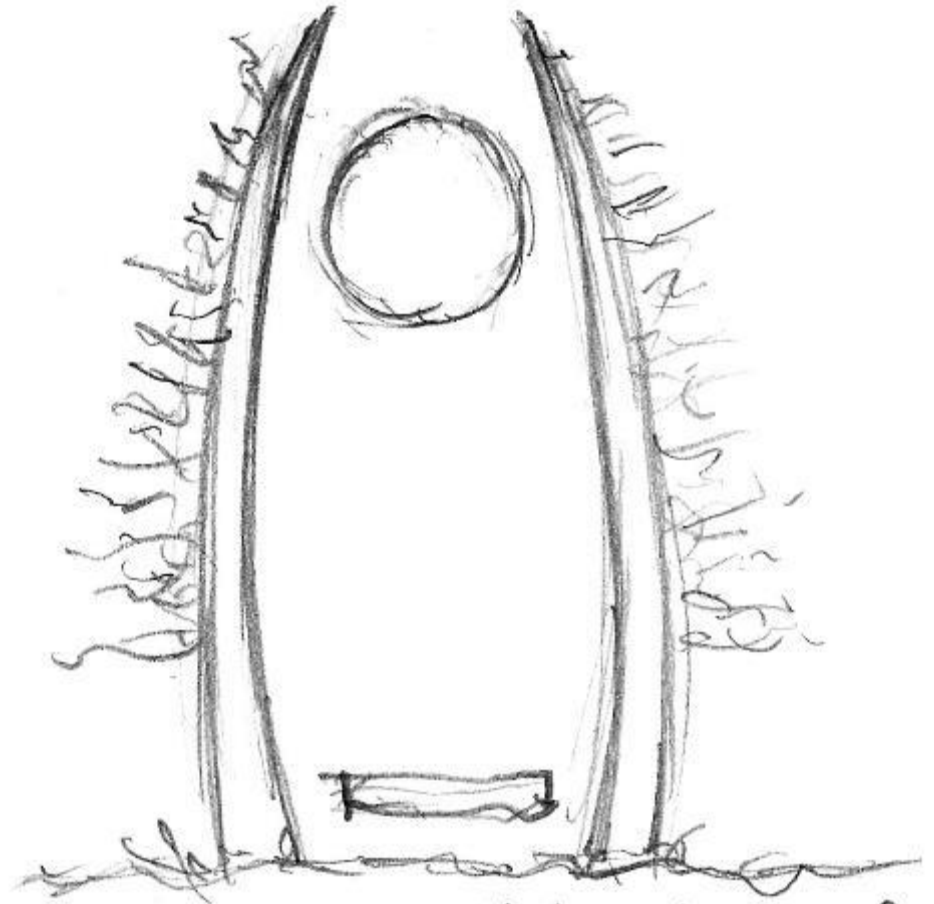




# "Grove" Solar Connection Exploration

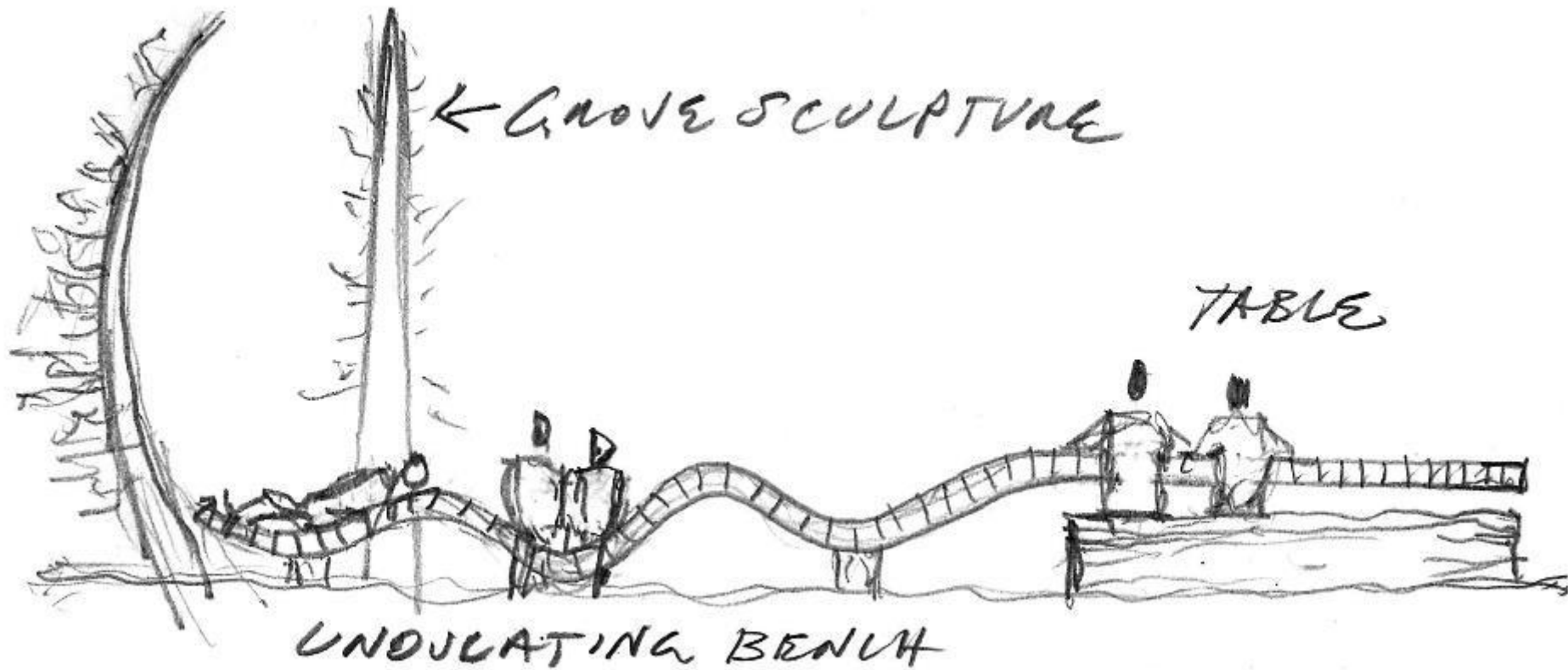


PORTAL AT BASE  
OPTION



FRAME THE EQUINOX  
OR SOLSTICE SUN

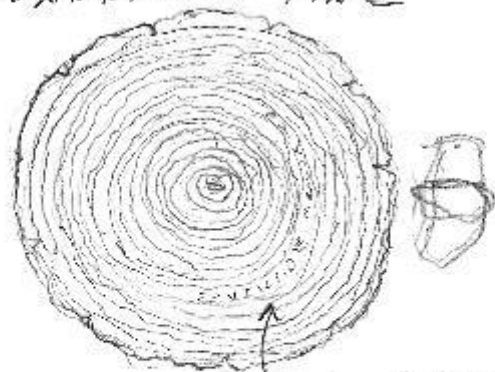
## “Grove” Integrated Seating Exploration



# "Time Table" Design Concepts



POIKILODORA PINE



DENDROLOGY OF  
SOUTHSIDE  
ETCHED STONE, SS

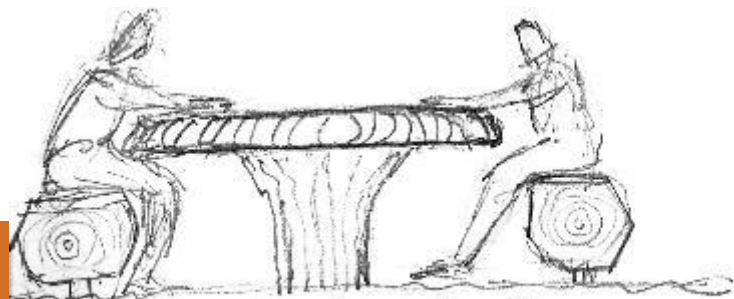
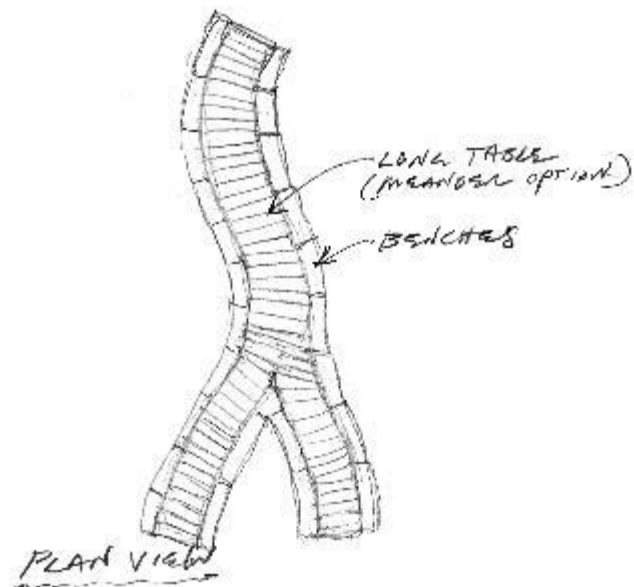
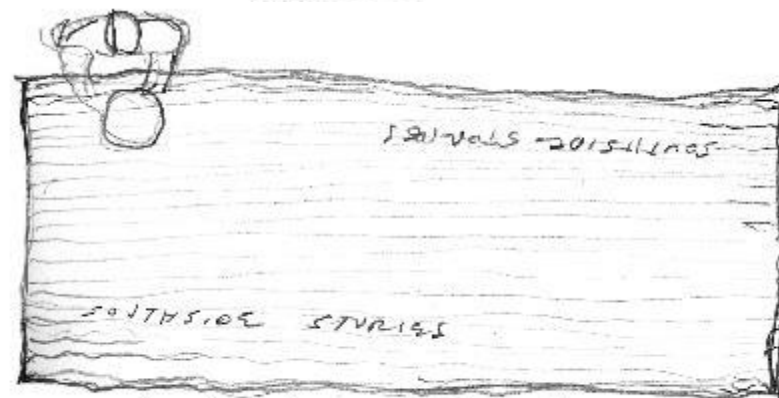


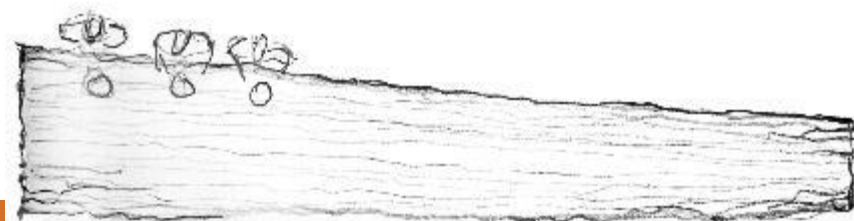
TABLE SECTION



PLAN VIEW



LONG CUT SLAB OF TIMBER



SUPER LONG CUT SLAB





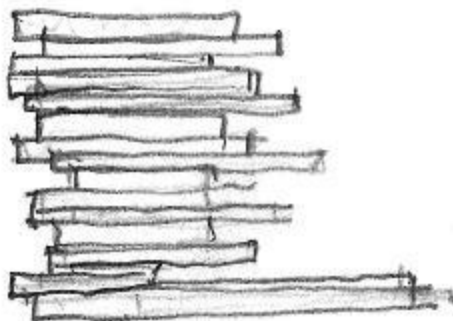
# "Log & Lumber" Bench Design Concepts



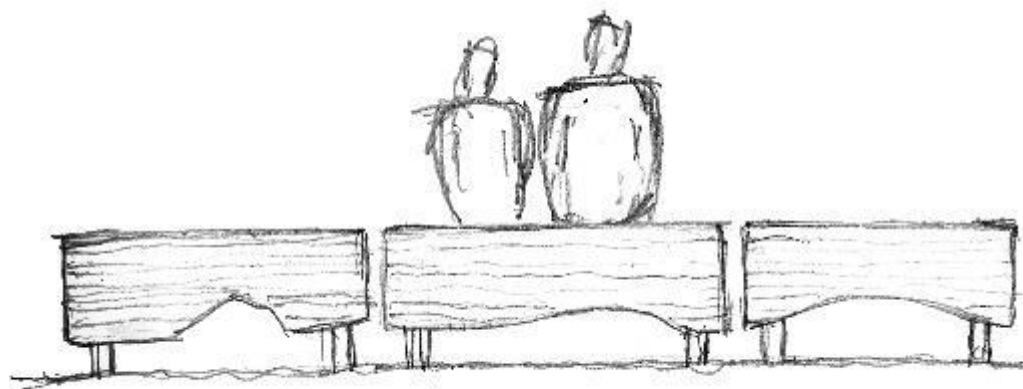
LOGS INTO LUMBER



ILLUMINATED  
LOG SEATS  
(CAST RESIN)



STACKED LUMBER



BENCH OPTION



# “Log & Lumber” Materials



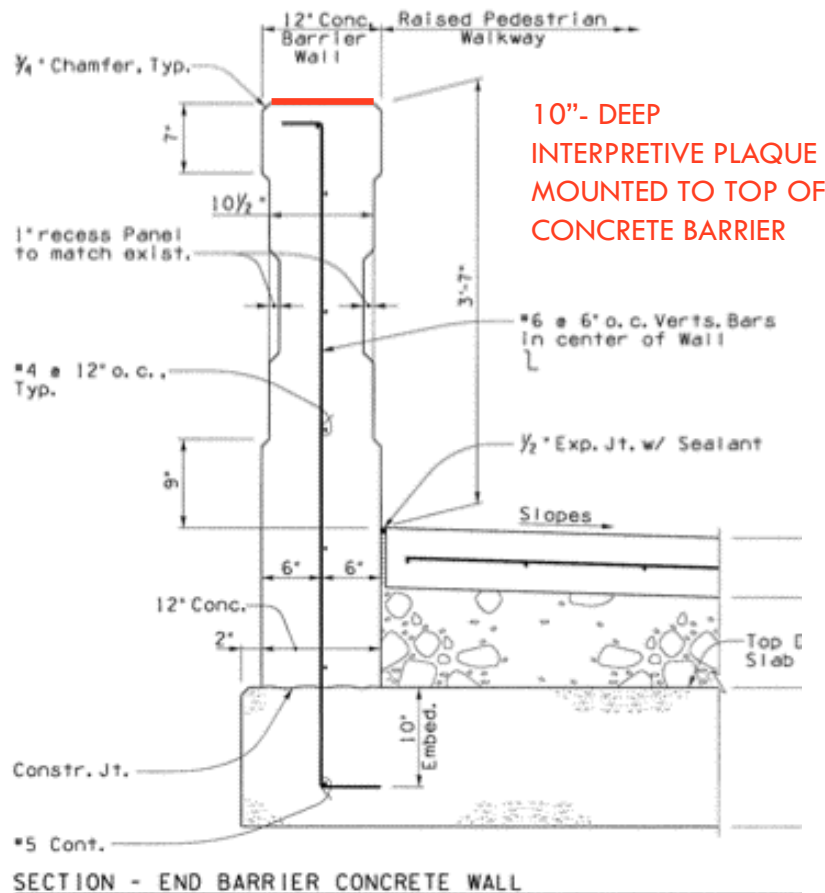


# INTERPRETIVE PLAQUES — Rio/Route 66 Bridge

- Opportunity for local regional artist
- Interpretive plaques incorporated with Route 66 Bridge Replacement on Phoenix Avenue
- Adjacency of art to daylighted portion of Rio, Route 66, the railroad, and Southside present rich opportunities and high visibility for storytelling



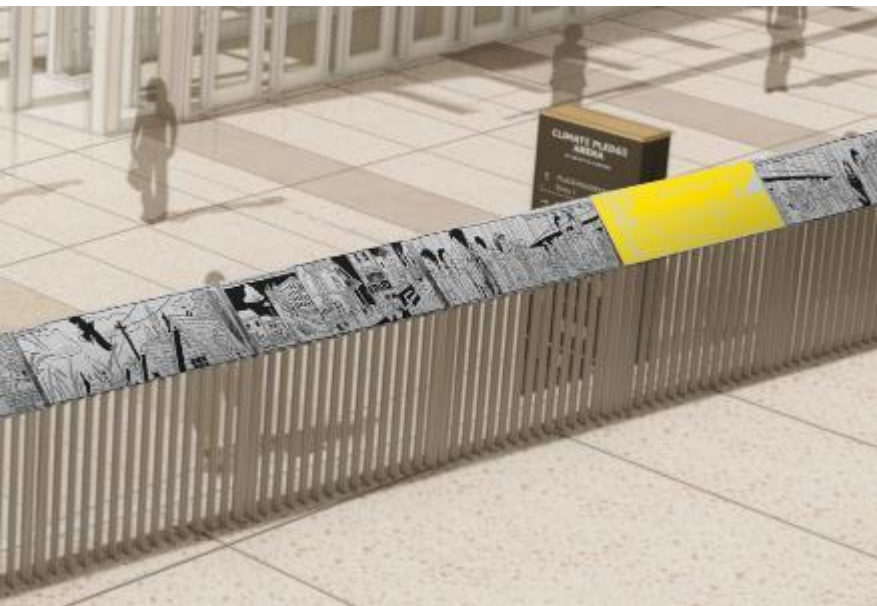




Interpretive plaques are required as part of mitigation by the Army Corps of Engineers. One plaque must relate the history of the A-P Railroad and its role in the history of Flagstaff and the U.S.; and one plaque must explain the historic significance of the Southside/Old Town and Railroad Addition Historic Districts and Route 66 historic alignment. Plaques may be located on the top of the Phoenix Avenue Bridge, due for replacement in the coming year, or adjacent to the railing. It is acceptable for an artist to design these plaques if they address these themes and include factual information to satisfy requirements. Funding for research, design and implementation would be by Army Corps, with artist procurement by Beautification and Public Art.

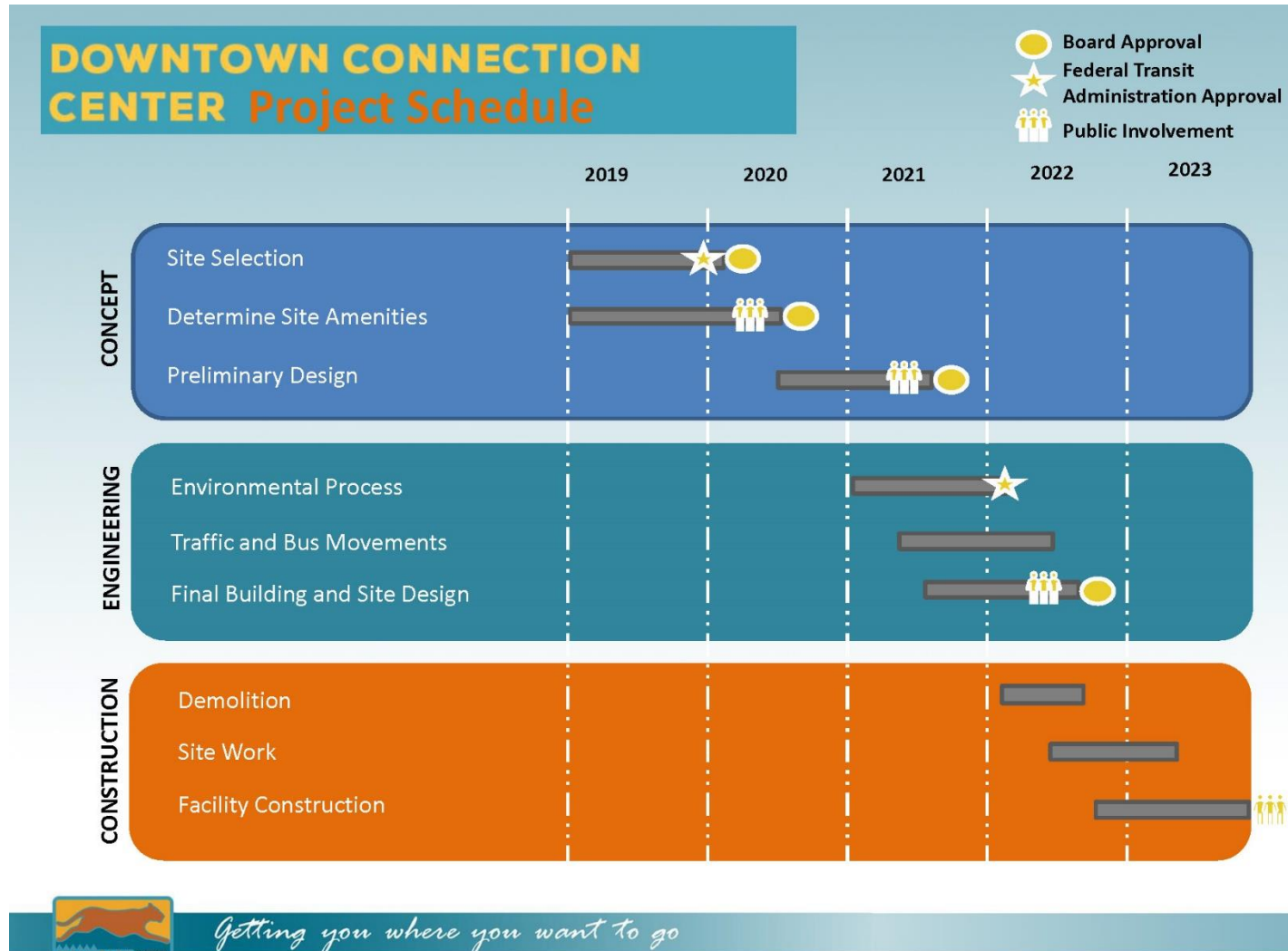


# Plaque Precedents





# DCC PROJECT SCHEDULE



- Collect and summarize feedback received during public meetings
- Present DCC at Planning and Zoning Commission Meeting on October 27, 2021



# HOW TO PROVIDE FEEDBACK AFTER TODAY'S MEETING

## 1. Attend a Virtual Public Meeting:

- September 15 – 1pm to 2pm
- September 15 – 6pm to 7pm
- September 30 – 11am to 12pm

Visit [mountainline.az.gov/dcc/](https://mountainline.az.gov/dcc/) for Zoom meeting links

**Please provide your  
feedback by  
September 22, 2021**

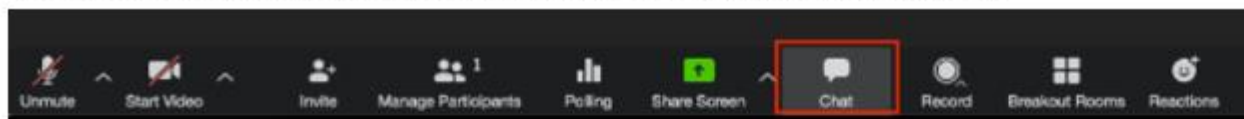
## 2. Online survey at [mountainline.az.gov/dcc/](https://mountainline.az.gov/dcc/)

## 3. Send an email to [DCC\\_comments@naipta.az.gov](mailto:DCC_comments@naipta.az.gov)

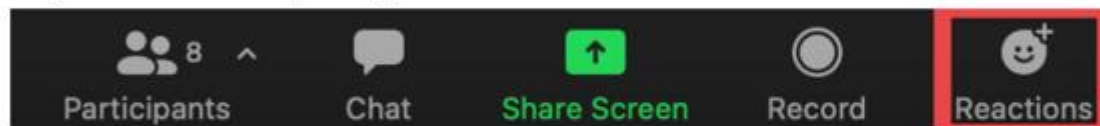
# Comments / Questions



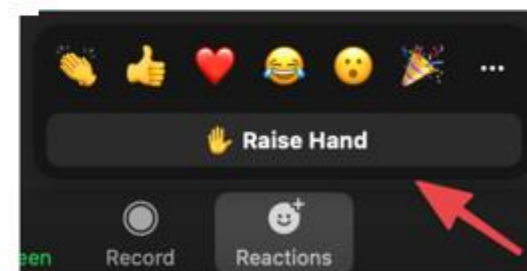
- To submit questions / comments use the **Chat** feature



- If you wish to speak, use the **Raise Hand** feature



*Note: "Reactions" is the fifth option from the left at the bottom of the screen.*



*Note: Click "Raise Hand" at the bottom of the emoji list.*



# DOWNTOWN CONNECTION CENTER

**CONNECTING  
FLAGSTAFF**

**Project Webpage:** [mountainline.az.gov/dcc/](http://mountainline.az.gov/dcc/)

**Email:** [DCC\\_comments@naipta.az.gov](mailto:DCC_comments@naipta.az.gov)

Thank you for joining us today.

