



Mountain Line

3773 N. Kaspar Drive · Flagstaff, AZ 86004 · 928-679-8900 · FAX 928-779-6868 · www.mountainline.az.gov

Addendum #1

DATE: April 1, 2022

TO: All Interested Vendors for RFP 2022-190, Testing and Inspection Services

This addendum (Addendum #1) is hereby made part of RFP 2022-190, and shall be considered a part of the bid specifications for all purposes including bid preparation and evaluation.

The RFP is amended to include Attachment A of this First Addendum, Plans.

For any questions, contact Heather Thornton, at NAIPTA, 3773 N Kaspar Dr, Flagstaff, Arizona 86004. Telephone: (928) 679-8907. Email: purchasing@naitpa.az.gov

This addendum must be signed by an authorized person and submitted with your submittal package.

I have read this addendum and understand the information stated above.

Authorized Signature

Date

Print or Type Name of Authorized Person

Getting you where you want to go



NOTES



- STONE VENEER
- BOARD FORM CONCRETE
- METAL PANEL
- STANDING SEAM METAL PANEL ROOF



Call at least two full working days
before you begin excavation.

Arizona Blue Stake, Inc.
Dial 8-1-1 or 1-800-STAKE-IT (782-5348)
in Maricopa County: (602) 263-1100

11/2/2021 4:25:59 PM

REV	DATE	DESCRIPTION

Submittal:

Seal:

Consultant:
AECOM
7720 North 16th Street Suite 100 Phoenix, AZ 85020 Phone: (602) 371-1100
Submitted By: _____

Client:
 
Designed By:
PA
Checked By:
NM, AH, TM
Approved By:
Approver

60595394 - NAIPTA DOWNTOWN CONNECTION CENTER

@ 24X36
Title:
Building Elevations
Submittal Date:
Contract No.:
TBD
Sheet No.:
A2.1

NOTES



- STONE VENEER
- BOARD FORM CONCRETE
- METAL PANEL
- STANDING SEAM METAL PANEL ROOF



FIRST FLOOR = 6900.70

Call at least two full working days
before you begin excavation.

Arizona Blue Stake, Inc.
Dial 8-1-1 or 1-800-STAKE-IT (782-5348)
in Maricopa County: (602) 263-1100

11/2/2021 4:26:11 PM

REV	DATE	DESCRIPTION

Submittal:

Seal:

Consultant:
AECOM
7720 North 16th Street Suite 100 Phoenix, AZ 85020 Phone: (602) 371-1100
Submitted By: _____

Client:
 
Approved By: _____

Designed By:
PA
Drawn By:
PA
Checked By:
NM, AH, TM
Approved By:
Approver

60595394 - NAIPTA DOWNTOWN CONNECTION CENTER	@ 24X36
	Title: Building Elevations
	Submittal Date:
	Contract No.: TBD
	Sheet No.: A2.2

S. MILTON ROAD

W. PHOENIX AVENUE

Call at least two full working days before you begin excavation.

Arizona Blue Stake, Inc.
Dial 8-1-1 or 1-800-STAKE-IT (782-5348)
in Maricopa County: (602) 263-1100

11/8/2021 2:12:36 PM

REV	DATE	DESCRIPTION

Submittal:

SITE PLAN

Seal:

**PRELIMINARY
NOT FOR
CONSTRUCTION**

Consultant:

AECOM

7720 North 16th Street
Suite 100
Phoenix, AZ 85020
Phone: (602) 371-1100

Submitted By: _____

Client:



Approved By: _____

Designed By:
PA

Drawn By:
PA

Checked By:
NM, AH, TM

Approved By:
Approver

**NAIPTA MOUNTAIN LINE
DOWNTOWN CONNECTION CENTER (DCC) - PHASE ONE**

216 W. PHOENIX AVENUE, FLAGSTAFF, AZ 86001
ASSESSOR'S PARCEL NUMBER (APN): 1004405A, 10043003B, 10043001D

PROPERTY OWNER: BRYCE DOTY, CITY OF FLAGSTAFF, (928) 637-8384
DEVELOPER: KATE MORLEY, MOUNTAIN LINE, (928) 679-8903
3773 N. KASPER DRIVE, FLAGSTAFF, AZ, 86004
PREPARER: JENNIFER LOVE, AECOM (602) 648-2423

@ 24X36

Title:
First Floor Plan

Submittal Date:
11/09/2021

Contract No.:
TBD

Sheet No.:
3





1 Second Floor
1/8" = 1'-0"

Call at least two full working days
before you begin excavation.

Arizona Blue Stake, Inc.
Dial 8-1-1 or 1-800-STAKE-IT (782-5348)
in Maricopa County: (602) 263-1100

11/8/2021 2:10:59 PM

REV	DATE	DESCRIPTION

Submittal:

SITE PLAN

Seal:

**PRELIMINARY
NOT FOR
CONSTRUCTION**

Consultant:

AECOM

7720 North 16th Street
Suite 100
Phoenix, AZ 85020
Phone: (602) 371-1100

Submitted By: _____

Client:

NAIPTA
Public Transportation Authority

MOUNTAIN LINE

Approved By: _____

Designed By:
PA

Drawn By:
PA

Checked By:
NM, AH, TM

Approved By:
Approver

**NAIPTA MOUNTAIN LINE
DOWNTOWN CONNECTION CENTER (DCC) - PHASE ONE**

216 W. PHOENIX AVENUE, FLAGSTAFF, AZ 86001
ASSESSOR'S PARCEL NUMBER (APN): 1004405A, 10043003B, 10043001D

PROPERTY OWNER: BRYCE DOTY, CITY OF FLAGSTAFF, (928) 637-8384
DEVELOPER: KATE MORLEY, MOUNTAIN LINE, (928) 679-8903
3773 N. KASPER DRIVE, FLAGSTAFF, AZ, 86004
PREPARER: JENNIFER LOVE, AECOM (602) 648-2423

@ 24X36

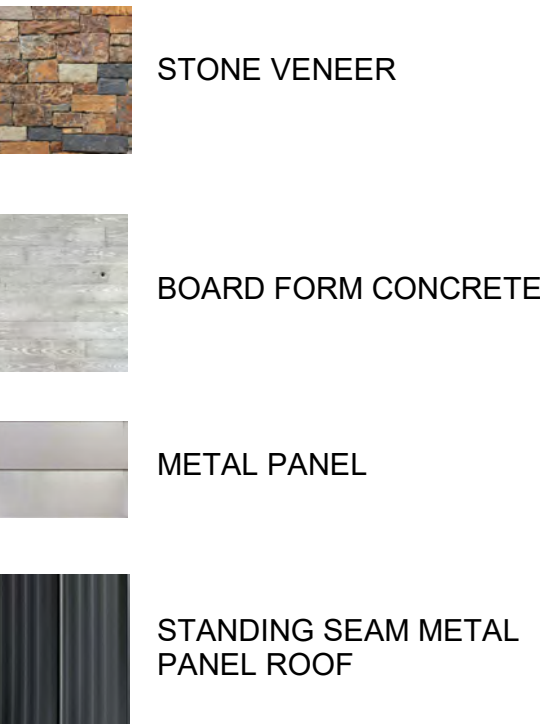
Title:
Second Floor Plan

Submittal Date:
11/09/2021

Contract No.:
TBD

Sheet No.:
4

NOTES



FIRST FLOOR = 6900.70

Call at least two full working days before you begin excavation.

Arizona Blue Stake, Inc.
Dial 8-1-1 or 1-800-STAKE-IT (782-5348)
in Maricopa County: (602) 263-1100

11/8/2021 2:09:18 PM

REV	DATE	DESCRIPTION

Submittal:

SITE PLAN

Seal:

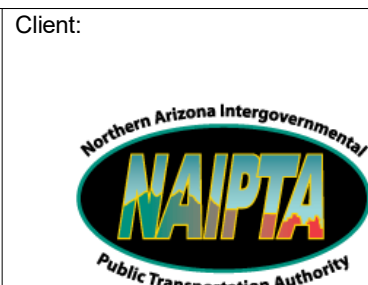
**PRELIMINARY
NOT FOR
CONSTRUCTION**

Consultant:

AECOM

7720 North 16th Street
Suite 100
Phoenix, AZ 85020
Phone: (602) 371-1100

Submitted By: _____



Approved By: _____

Designed By:
PA

Drawn By:
PA

Checked By:
NM, AH, TM

Approved By:
Approver

**NAIPTA MOUNTAIN LINE
DOWNTOWN CONNECTION CENTER (DCC) - PHASE ONE**

216 W. PHOENIX AVENUE, FLAGSTAFF, AZ 86001
ASSESSOR'S PARCEL NUMBER (APN): 1004405A, 10043003B, 10043001D

PROPERTY OWNER: BRYCE DOTY, CITY OF FLAGSTAFF, (928) 637-8384
DEVELOPER: KATE MORLEY, MOUNTAIN LINE, (928) 679-8903
3773 N. KASPER DRIVE, FLAGSTAFF, AZ, 86004
PREPARER: JENNIFER LOVE, AECOM (602) 648-2423

@ 24X36

Title:
Building Elevations

Submittal Date:
11/09/2021

Contract No.:
TBD

Sheet No.:
5

NOTES



2 EAST - ENTRANCE ELEVATION
1/8" = 1'-0"

- STONE VENEER
- BOARD FORM CONCRETE
- METAL PANEL
- STANDING SEAM METAL PANEL ROOF



1 S. MILTON RD
1/8" = 1'-0"

FIRST FLOOR = 6900.70

Call at least two full working days
before you begin excavation.

Arizona Blue Stake, Inc.
Dial 8-1-1 or 1-800-STAKE-IT (782-5348)
in Maricopa County: (602) 263-1100

11/8/2021 1:55:24 PM

REV	DATE	DESCRIPTION

Submittal:
SITE PLAN

Seal:
PRELIMINARY NOT FOR CONSTRUCTION

Consultant:
AECOM
7720 North 16th Street Suite 100 Phoenix, AZ 85020 Phone: (602) 371-1100
Submitted By: _____

Client:
 
Approved By: _____

Designed By:
PA
Drawn By:
PA
Checked By:
NM, AH, TM
Approved By:
Approver

NAIPTA MOUNTAIN LINE DOWNTOWN CONNECTION CENTER (DCC) - PHASE ONE
216 W. PHOENIX AVENUE, FLAGSTAFF, AZ 86001
ASSESSOR'S PARCEL NUMBER (APN): 1004405A, 10043003B, 10043001D
PROPERTY OWNER: BRYCE DOTY, CITY OF FLAGSTAFF, (928) 637-8384
DEVELOPER: KATE MORLEY, MOUNTAIN LINE, (928) 679-8903
3773 N. KASPER DRIVE, FLAGSTAFF, AZ, 86004
PREPARER: JENNIFER LOVE, AECOM (602) 648-2423

@ 24X36
Title: Building Elevations
Submittal Date: 11/09/2021
Contract No.: TBD
Sheet No.: 6



Call at least two full working days
before you begin excavation.

Arizona Blue Stake, Inc.
Dial 8-1-1 or 1-800-STAKE-IT (782-5348)
in Maricopa County: (602) 263-1100

11/8/2021 1:53:04 PM

REV	DATE	DESCRIPTION

Submittal:
SITE PLAN

Seal:
PRELIMINARY NOT FOR CONSTRUCTION

Consultant:
AECOM
7720 North 16th Street Suite 100 Phoenix, AZ 85020 Phone: (602) 371-1100
Submitted By: _____

Client:
 
Approved By: _____

Designed By:
PA
Drawn By:
PA
Checked By:
NM, AH, TM
Approved By:
NM, AH

NAIPTA MOUNTAIN LINE DOWNTOWN CONNECTION CENTER (DCC) - PHASE ONE
216 W. PHOENIX AVENUE, FLAGSTAFF, AZ 86001
ASSESSOR'S PARCEL NUMBER (APN): 1004405A, 10043003B, 10043001D
PROPERTY OWNER: BRYCE DOTY, CITY OF FLAGSTAFF, (928) 637-8384
DEVELOPER: KATE MORLEY, MOUNTAIN LINE, (928) 679-8903
3773 N. KASPER DRIVE, FLAGSTAFF, AZ, 86004
PREPARER: JENNIFER LOVE, AECOM (602) 648-2423

@ 24X36
Title: Perspective View
Submittal Date: 11/09/2021
Contract No.: TBD
Sheet No.: 7



Call at least two full working days
before you begin excavation.

Arizona Blue Stake, Inc.
Dial 8-1-1 or 1-800-STAKE-IT (782-5348)
in Maricopa County: (602) 263-1100

11/8/2021 1:50:52 PM

REV	DATE	DESCRIPTION

Submittal:
SITE PLAN

Seal:
PRELIMINARY NOT FOR CONSTRUCTION

Consultant:
AECOM
7720 North 16th Street Suite 100 Phoenix, AZ 85020 Phone: (602) 371-1100
Submitted By: _____

Client:
 
Approved By: _____

Designed By:
PA
Drawn By:
PA
Checked By:
NM, AH, TM
Approved By:
Approver

NAIPTA MOUNTAIN LINE DOWNTOWN CONNECTION CENTER (DCC) - PHASE ONE
216 W. PHOENIX AVENUE, FLAGSTAFF, AZ 86001
ASSESSOR'S PARCEL NUMBER (APN): 1004405A, 10043003B, 10043001D
PROPERTY OWNER: BRYCE DOTY, CITY OF FLAGSTAFF, (928) 637-8384
DEVELOPER: KATE MORLEY, MOUNTAIN LINE, (928) 679-8903
3773 N. KASPER DRIVE, FLAGSTAFF, AZ, 86004
PREPARER: JENNIFER LOVE, AECOM (602) 648-2423

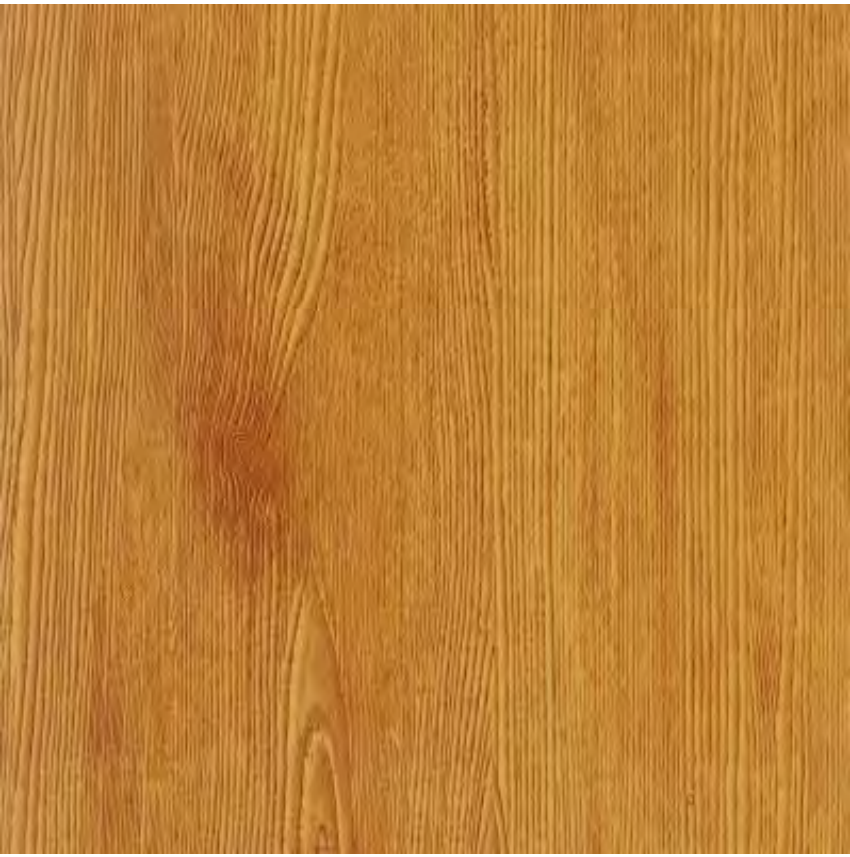
@ 24X36
Title: Perspective View
Submittal Date: 11/09/2021
Contract No.: TBD
Sheet No.: 8



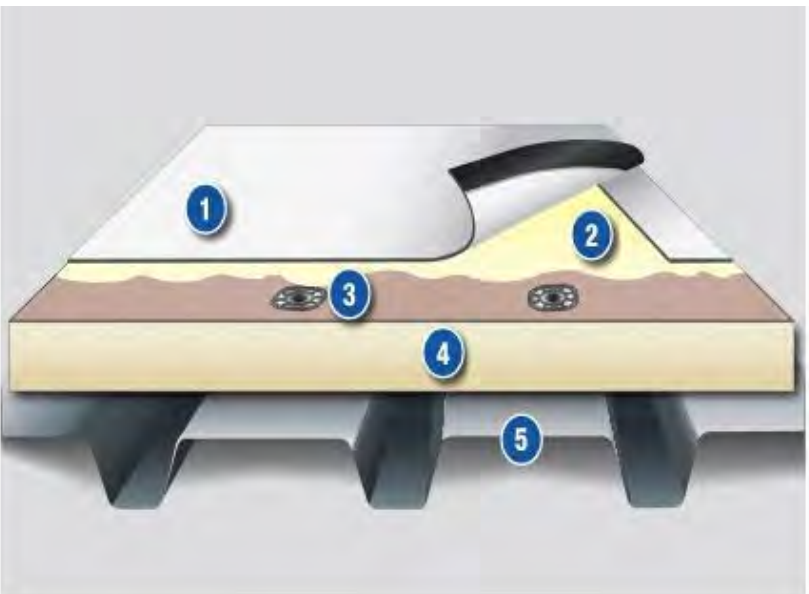
STONE VENEER
MANUF: Stone Solutions Arizona
PRODUCT: STONE VENEER
SIZE:
COLOR: BEAR HOLLOW DRY STACK
REFLECTANCE: SRI 38, LRV APPROX. 17



STANDING SEAM METAL PANEL ROOF
MANUF: FIRESTONE
PRODUCT: UNACLAD - UC-3
- .040" ALUMINUM
- 1.5" RIB, 12" WIDE PANEL
- FLUOROPOLYMER COATING
COLOR: CHARCOAL GRAY
REFLECTANCE: SRI 29, LRV APPROX. 7



WOOD LOOK METAL SOFFIT
MANUF: KNOTWOOD
PRODUCT: SOFFIT SYSTEM
- .055" ALUMINUM
- 1.5" RIB, 6" WIDE PANEL
COLOR: KNOTTY PINE
REFLECTANCE: SRI 29, LRV APPROX. 32



EPDM ROOF
MANUF: CARLISLE
PRODUCT: SURE-WHITE EPDM
TYPE: FULLY ADHERED
SIZE: 60 MIL, 10' WIDE
COLOR: WHITE
REFLECTANCE: SRI 99, LRV APPROX. 84



METAL PANEL
MANUF: CENTRIA
PRODUCT: INTERCEPT HLZ
- .060" ALUMINUM
- 1 3/8" DEEP
- 3/4" REVEAL
- SUNDANCE AM ALUM. METALLIC 3-COAT
COLOR: 1243 MOCHA
REFLECTANCE: SRI 43, LRV APPROX. 22



CURTAINWALL GLAZING SYSTEM
MANUF: KAWNEER
PRODUCT: 1620UT CURTAIN WALL SYSTEM
- DOUBLE GLAZED INSULATED GLASS
- 2" SIGHTLINE & 7-1/2" DEPTH
- 12" MULLION EXTENSION AT LOBBY
COLOR: CHARCOAL
REFLECTANCE: SRI 43, LRV APPROX. 22

GLASS
MANUF: VIRACON
PRODUCT: VE1-2M
- 1/4" CLEAR HS
- 1/2" BLACK SPACER
- 1/4" CLEAR HS
VLT: 59%
SHGC: 0.33
REF: 16%
SHADING: 0.38



CAST IN PLACE CONCRETE WITH BOARD FORMS
MANUF: FITZGERALD FORMLINERS
PRODUCT: 16020 ROUGH GRAIN PLANK
SIZE: 4.3" BOARD WIDTH
COLOR: REGULAR CONCRETE
REFLECTANCE: SRI 45, LRV APPROX. 24

Call at least two full working days
before you begin excavation.

Arizona Blue Stake, Inc.
Dial 8-1-1 or 1-800-STAKE-IT (782-5348)
in Maricopa County: (602) 263-1100

11/8/2021 1:42:56 PM

REV	DATE	DESCRIPTION

Submittal:
SITE PLAN

Seal:
PRELIMINARY NOT FOR CONSTRUCTION

Consultant:
AECOM
7720 North 16th Street Suite 100 Phoenix, AZ 85020 Phone: (602) 371-1100
Submitted By: _____

Client:
 
Approved By: _____

Designed By:
Designer
Drawn By:
Author
Checked By:
Checker
Approved By:
Approver

NAIPTA MOUNTAIN LINE DOWNTOWN CONNECTION CENTER (DCC) - PHASE ONE
216 W. PHOENIX AVENUE, FLAGSTAFF, AZ 86001 ASSESSOR'S PARCEL NUMBER (APN): 1004405A, 10043003B, 10043001D PROPERTY OWNER: BRYCE DOTY, CITY OF FLAGSTAFF, (928) 637-8384 DEVELOPER: KATE MORLEY, MOUNTAIN LINE, (928) 679-8903 3773 N. KASPER DRIVE, FLAGSTAFF, AZ, 86004 PREPARER: JENNIFER LOVE, AECOM (602) 648-2423

@ 24X36
Title:
Material Specification
Submittal Date:
11/09/2021
Contract No.:
TBD
Sheet No.:
9

S. MILTON ROAD

W. PHOENIX AVENUE

Call at least two full working days before you begin excavation.

Arizona Blue Stake, Inc.
Dial 8-1-1 or 1-800-STAKE-IT (782-5348)
in Maricopa County: (602) 263-1100

11/8/2021 2:12:36 PM

REV	DATE	DESCRIPTION

Submittal:

SITE PLAN

Seal:

**PRELIMINARY
NOT FOR
CONSTRUCTION**

Consultant:

AECOM

7720 North 16th Street
Suite 100
Phoenix, AZ 85020
Phone: (602) 371-1100

Submitted By: _____

Client:



Approved By: _____

Designed By:
PA

Drawn By:
PA

Checked By:
NM, AH, TM

Approved By:
Approver

**NAIPTA MOUNTAIN LINE
DOWNTOWN CONNECTION CENTER (DCC) - PHASE ONE**

216 W. PHOENIX AVENUE, FLAGSTAFF, AZ 86001
ASSESSOR'S PARCEL NUMBER (APN): 1004405A, 10043003B, 10043001D

PROPERTY OWNER: BRYCE DOTY, CITY OF FLAGSTAFF, (928) 637-8384
DEVELOPER: KATE MORLEY, MOUNTAIN LINE, (928) 679-8903
3773 N. KASPER DRIVE, FLAGSTAFF, AZ, 86004
PREPARER: JENNIFER LOVE, AECOM (602) 648-2423

@ 24X36

Title:
First Floor Plan

Submittal Date:
11/09/2021

Contract No.:
TBD

Sheet No.:
3





1 Second Floor
1/8" = 1'-0"

Call at least two full working days
before you begin excavation.

Arizona Blue Stake, Inc.
Dial 8-1-1 or 1-800-STAKE-IT (782-5348)
in Maricopa County: (602) 263-1100

11/8/2021 2:10:59 PM

REV	DATE	DESCRIPTION

Submittal:

SITE PLAN

Seal:

**PRELIMINARY
NOT FOR
CONSTRUCTION**

Consultant:

AECOM

7720 North 16th Street
Suite 100
Phoenix, AZ 85020
Phone: (602) 371-1100

Submitted By: _____

Client:

NAIPTA
Public Transportation Authority

MOUNTAIN LINE

Approved By: _____

Designed By:
PA

Drawn By:
PA

Checked By:
NM, AH, TM

Approved By:
Approver

**NAIPTA MOUNTAIN LINE
DOWNTOWN CONNECTION CENTER (DCC) - PHASE ONE**

216 W. PHOENIX AVENUE, FLAGSTAFF, AZ 86001
ASSESSOR'S PARCEL NUMBER (APN): 1004405A, 10043003B, 10043001D

PROPERTY OWNER: BRYCE DOTY, CITY OF FLAGSTAFF, (928) 637-8384
DEVELOPER: KATE MORLEY, MOUNTAIN LINE, (928) 679-8903
3773 N. KASPER DRIVE, FLAGSTAFF, AZ, 86004
PREPARER: JENNIFER LOVE, AECOM (602) 648-2423

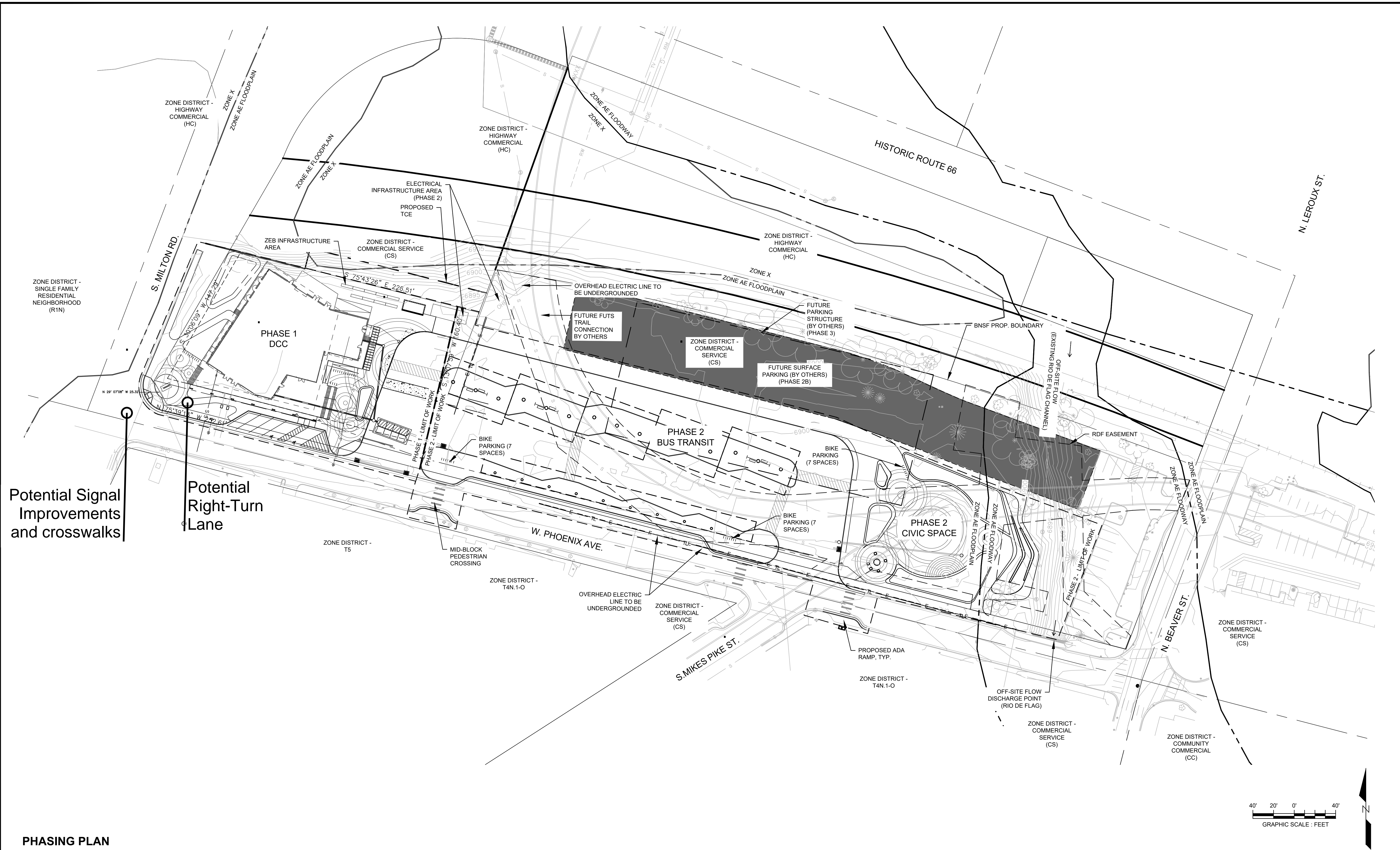
@ 24X36

Title:
Second Floor Plan

Submittal Date:
11/09/2021

Contract No.:
TBD

Sheet No.:
4



PHASING PLAN

Figure 3. Concept Plan

12/36

6-Dec-2021

REV

DATE

DESCRIPTION

Figure 3. Concept Plan

Submittal:

Seal:

PRELIMINARY
NOT FOR
CONSTRUCTION

Consultant:


AECOM

7720 North 16th Street
Suite 100
Phoenix, AZ 85020
Phone: (602) 371-1100

Submitted By: _____

Consultant:

Northern Arizona Intergovernmental
NAIPTA
Public Transportation Authority



MOUNTAIN LINE

Approved By: _____

Designed By:

JM

Drawn By:

KB/JM

Checked By:

CL

Approved By:

NAIPTA MOUNTAIN LINE
DOWNTOWN CONNECTION CENTER (DCC) - PHASE ONE

216 W. PHOENIX AVENUE, FLAGSTAFF, AZ 86001
ASSESSOR'S PARCEL NUMBER (APN): 1004405A, 10043003B, 10043001D
PROPERTY OWNER: BRYCE DOTY, CITY OF FLAGSTAFF, (928) 637-8384
DEVELOPER: KATE MORLEY, MOUNTAIN LINE, (928) 679-8903
3773 N. KASPER DRIVE, FLAGSTAFF, AZ 86004
PREPARER: JENNIFER LOVE, AECOM, (602) 648-2423

@ 24X36

CADD Filename:
60595394_DCC_Phase_Plan.dwg

Submittal Date:
12/7/2021

Contract No.:
60595394

Sheet No.:
1

NOTES



- STONE VENEER
- BOARD FORM CONCRETE
- METAL PANEL
- STANDING SEAM METAL PANEL ROOF



FIRST FLOOR = 6900.70

Call at least two full working days before you begin excavation.

Arizona Blue Stake, Inc.
Dial 8-1-1 or 1-800-STAKE-IT (782-5348)
in Maricopa County: (602) 263-1100

11/8/2021 2:09:18 PM

REV	DATE	DESCRIPTION

Submittal:
SITE PLAN

Seal:
PRELIMINARY NOT FOR CONSTRUCTION

Consultant:
AECOM
7720 North 16th Street Suite 100 Phoenix, AZ 85020 Phone: (602) 371-1100
Submitted By: _____

Client:
 
Approved By: _____

Designed By:
PA
Drawn By:
PA
Checked By:
NM, AH, TM
Approved By:
Approver

NAIPTA MOUNTAIN LINE DOWNTOWN CONNECTION CENTER (DCC) - PHASE ONE
216 W. PHOENIX AVENUE, FLAGSTAFF, AZ 86001
ASSESSOR'S PARCEL NUMBER (APN): 1004405A, 10043003B, 10043001D
PROPERTY OWNER: BRYCE DOTY, CITY OF FLAGSTAFF, (928) 637-8384
DEVELOPER: KATE MORLEY, MOUNTAIN LINE, (928) 679-8903
3773 N. KASPER DRIVE, FLAGSTAFF, AZ, 86004
PREPARER: JENNIFER LOVE, AECOM (602) 648-2423

@ 24X36
Title:
Building Elevations
Submittal Date:
11/09/2021
Contract No.:
TBD
Sheet No.:
5

NOTES



2 EAST - ENTRANCE ELEVATION
1/8" = 1'-0"

- STONE VENEER
- BOARD FORM CONCRETE
- METAL PANEL
- STANDING SEAM METAL PANEL ROOF



1 S. MILTON RD
1/8" = 1'-0"

FIRST FLOOR = 6900.70

Call at least two full working days
before you begin excavation.

Arizona Blue Stake, Inc.
Dial 8-1-1 or 1-800-STAKE-IT (782-5348)
in Maricopa County: (602) 263-1100

11/8/2021 1:55:24 PM

REV	DATE	DESCRIPTION

Submittal:


SITE PLAN

Seal:

**PRELIMINARY
NOT FOR
CONSTRUCTION**

Consultant:
AECOM
7720 North 16th Street
Suite 100
Phoenix, AZ 85020
Phone: (602) 371-1100

Submitted By: _____

Client:

Northern Arizona Intergovernmental
Public Transportation Authority

Approved By: _____



Designed By:
PA
Drawn By:
PA
Checked By:
NM, AH, TM
Approved By:
Approver

**NAIPTA MOUNTAIN LINE
DOWNTOWN CONNECTION CENTER (DCC) - PHASE ONE**
216 W. PHOENIX AVENUE, FLAGSTAFF, AZ 86001
ASSESSOR'S PARCEL NUMBER (APN): 1004405A, 10043003B, 10043001D
PROPERTY OWNER: BRYCE DOTY, CITY OF FLAGSTAFF, (928) 637-8384
DEVELOPER: KATE MORLEY, MOUNTAIN LINE, (928) 679-8903
3773 N. KASPER DRIVE, FLAGSTAFF, AZ, 86004
PREPARER: JENNIFER LOVE, AECOM (602) 648-2423

@ 24X36
Title:
Building Elevations
Submittal Date:
11/09/2021
Contract No.:
TBD
Sheet No.:
6



Call at least two full working days
before you begin excavation.

Arizona Blue Stake, Inc.
Dial 8-1-1 or 1-800-STAKE-IT (782-5348)
in Maricopa County: (602) 263-1100

11/8/2021 1:53:04 PM

REV	DATE	DESCRIPTION

Submittal:
SITE PLAN

Seal:
PRELIMINARY NOT FOR CONSTRUCTION

Consultant:
AECOM
7720 North 16th Street Suite 100 Phoenix, AZ 85020 Phone: (602) 371-1100
Submitted By: _____

Client:
 
Approved By: _____

Designed By:
PA
Drawn By:
PA
Checked By:
NM, AH, TM
Approved By:
NM, AH

NAIPTA MOUNTAIN LINE DOWNTOWN CONNECTION CENTER (DCC) - PHASE ONE
216 W. PHOENIX AVENUE, FLAGSTAFF, AZ 86001
ASSESSOR'S PARCEL NUMBER (APN): 1004405A, 10043003B, 10043001D
PROPERTY OWNER: BRYCE DOTY, CITY OF FLAGSTAFF, (928) 637-8384
DEVELOPER: KATE MORLEY, MOUNTAIN LINE, (928) 679-8903
3773 N. KASPER DRIVE, FLAGSTAFF, AZ, 86004
PREPARER: JENNIFER LOVE, AECOM (602) 648-2423

@ 24X36
Title: Perspective View
Submittal Date: 11/09/2021
Contract No.: TBD
Sheet No.: 7



Call at least two full working days
before you begin excavation.

Arizona Blue Stake, Inc.
Dial 8-1-1 or 1-800-STAKE-IT (782-5348)
in Maricopa County: (602) 263-1100

11/8/2021 1:50:52 PM

REV	DATE	DESCRIPTION

Submittal:
SITE PLAN

Seal:
PRELIMINARY NOT FOR CONSTRUCTION

Consultant:
AECOM
7720 North 16th Street Suite 100 Phoenix, AZ 85020 Phone: (602) 371-1100
Submitted By: _____

Client:
 
Approved By: _____

Designed By:
PA
Drawn By:
PA
Checked By:
NM, AH, TM
Approved By:
Approver

NAIPTA MOUNTAIN LINE DOWNTOWN CONNECTION CENTER (DCC) - PHASE ONE
216 W. PHOENIX AVENUE, FLAGSTAFF, AZ 86001
ASSESSOR'S PARCEL NUMBER (APN): 1004405A, 10043003B, 10043001D
PROPERTY OWNER: BRYCE DOTY, CITY OF FLAGSTAFF, (928) 637-8384
DEVELOPER: KATE MORLEY, MOUNTAIN LINE, (928) 679-8903
3773 N. KASPER DRIVE, FLAGSTAFF, AZ, 86004
PREPARER: JENNIFER LOVE, AECOM (602) 648-2423

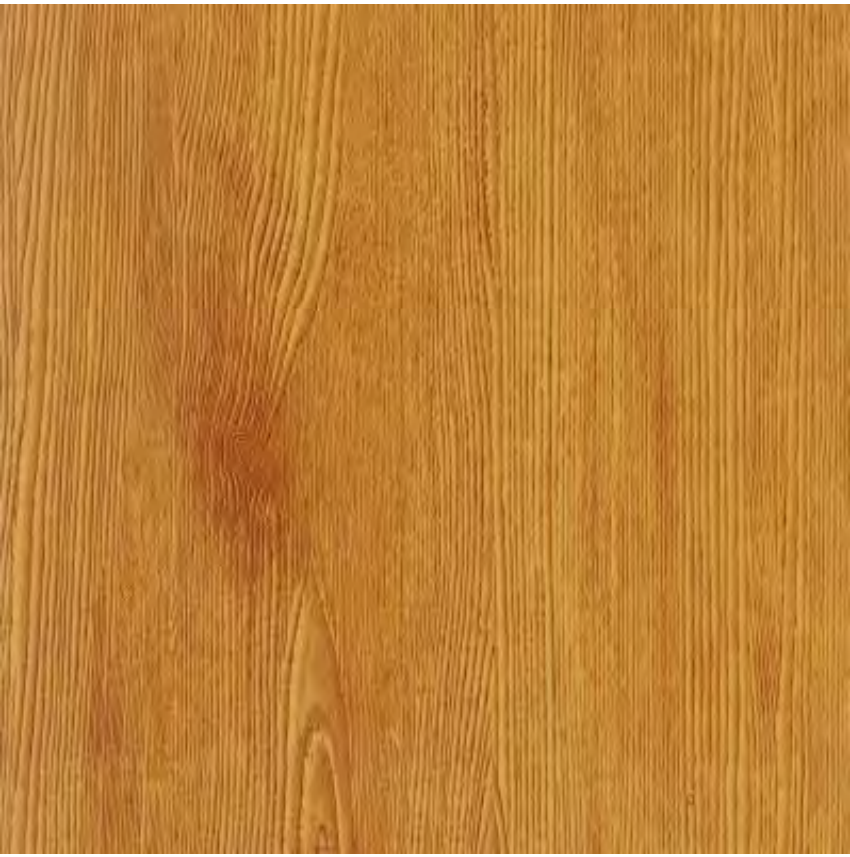
@ 24X36
Title: Perspective View
Submittal Date: 11/09/2021
Contract No.: TBD
Sheet No.: 8



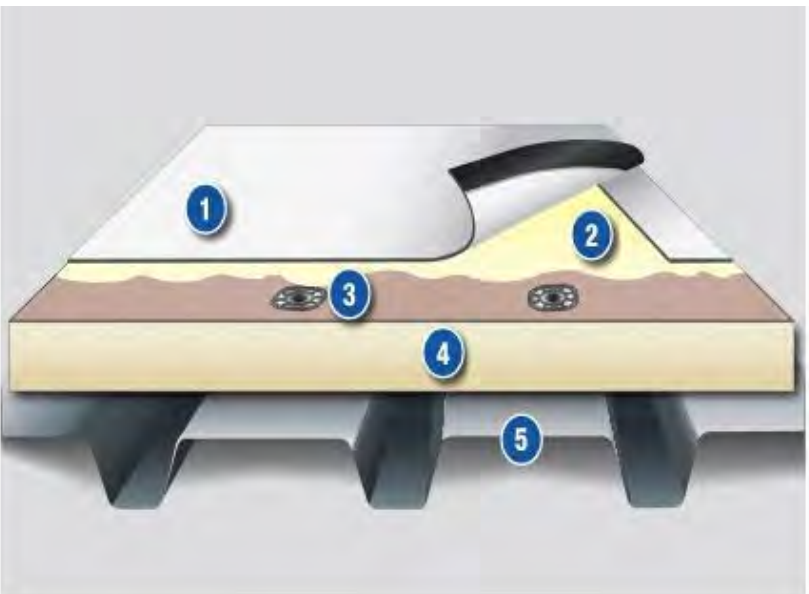
STONE VENEER
MANUF: Stone Solutions Arizona
PRODUCT: STONE VENEER
SIZE:
COLOR: BEAR HOLLOW DRY STACK
REFLECTANCE: SRI 38, LRV APPROX. 17



STANDING SEAM METAL PANEL ROOF
MANUF: FIRESTONE
PRODUCT: UNACLAD - UC-3
- .040" ALUMINUM
- 1.5" RIB, 12" WIDE PANEL
- FLUOROPOLYMER COATING
COLOR: CHARCOAL GRAY
REFLECTANCE: SRI 29, LRV APPROX. 7



WOOD LOOK METAL SOFFIT
MANUF: KNOTWOOD
PRODUCT: SOFFIT SYSTEM
- .055" ALUMINUM
- 1.5" RIB, 6" WIDE PANEL
COLOR: KNOTTY PINE
REFLECTANCE: SRI 29, LRV APPROX. 32



EPDM ROOF
MANUF: CARLISLE
PRODUCT: SURE-WHITE EPDM
TYPE: FULLY ADHERED
SIZE: 60 MIL, 10' WIDE
COLOR: WHITE
REFLECTANCE: SRI 99, LRV APPROX. 84



METAL PANEL
MANUF: CENTRIA
PRODUCT: INTERCEPT HLZ
- .060" ALUMINUM
- 1 3/8" DEEP
- 3/4" REVEAL
- SUNDANCE AM ALUM. METALLIC 3-COAT
COLOR: 1243 MOCHA
REFLECTANCE: SRI 43, LRV APPROX. 22



CURTAINWALL GLAZING SYSTEM
MANUF: KAWNEER
PRODUCT: 1620UT CURTAIN WALL SYSTEM
- DOUBLE GLAZED INSULATED GLASS
- 2" SIGHTLINE & 7-1/2" DEPTH
- 12" MULLION EXTENSION AT LOBBY
COLOR: CHARCOAL
REFLECTANCE: SRI 43, LRV APPROX. 22

GLASS
MANUF: VIRACON
PRODUCT: VE1-2M
- 1/4" CLEAR HS
- 1/2" BLACK SPACER
- 1/4" CLEAR HS
VLT: 59%
SHGC: 0.33
REF: 16%
SHADING: 0.38



CAST IN PLACE CONCRETE WITH BOARD FORMS
MANUF: FITZGERALD FORMLINERS
PRODUCT: 16020 ROUGH GRAIN PLANK
SIZE: 4.3" BOARD WIDTH
COLOR: REGULAR CONCRETE
REFLECTANCE: SRI 45, LRV APPROX. 24

Call at least two full working days
before you begin excavation.

Arizona Blue Stake, Inc.
Dial 8-1-1 or 1-800-STAKE-IT (782-5348)
in Maricopa County: (602) 263-1100

11/8/2021 1:42:56 PM

REV	DATE	DESCRIPTION

Submittal:
SITE PLAN

Seal:
PRELIMINARY NOT FOR CONSTRUCTION

Consultant:
AECOM
7720 North 16th Street Suite 100 Phoenix, AZ 85020 Phone: (602) 371-1100
Submitted By: _____

Client:
 
Approved By: _____

Designed By:
Designer
Drawn By:
Author
Checked By:
Checker
Approved By:
Approver

NAIPTA MOUNTAIN LINE DOWNTOWN CONNECTION CENTER (DCC) - PHASE ONE
216 W. PHOENIX AVENUE, FLAGSTAFF, AZ 86001
ASSESSOR'S PARCEL NUMBER (APN): 1004405A, 10043003B, 10043001D
PROPERTY OWNER: BRYCE DOTY, CITY OF FLAGSTAFF, (928) 637-8384
DEVELOPER: KATE MORLEY, MOUNTAIN LINE, (928) 679-8903
3773 N. KASPER DRIVE, FLAGSTAFF, AZ, 86004
PREPARER: JENNIFER LOVE, AECOM (602) 648-2423

@ 24X36
Title:
Material Specification
Submittal Date:
11/09/2021
Contract No.:
TBD
Sheet No.:
9